



The Port Report

December 2009

Inside this issue:

Cruise Ship Arrivals	I
Guam Shipyard	I
Warehouse 2	2
Christmas Party	3
New Year's Resolutions	4

Cruise Ship Arrivals Begin

The cruise ship M.S. Asuka II arrived on Guam in December with 675 tourists on board the vessel.

The M.S. Asuka II is based out of Japan and set sail in Yokohama on December 26th. The vessel sailed from Japan to Guam on December 30th then to Saipan for New Year's Eve. The ship had 675 passengers and 461 crew members. Most of the passengers were citizens of Japan while some were citizens of the United States, Germany, South Korea and Brazil. This is the 1st cruise ship to arrive on Guam for Fiscal Year 2010. Last year's Fiscal year of



U.S. Customs and Border Protection agents and Guam Customs and Quarantine agents they departed the ship and spent the day on tours of the island and shopping at various locations.

"The arrival of this cruise ship is a great boost to our economy and continues to show to the world that Guam is a world-class tourist destination," said Port General Manager Glenn A. Leon Guerrero. "The number of cruise ship arrivals continues to grow and we look forward to continuing our work with GVB to assist in this developing market."

Continued on page 2

Guam Shipyard Issue Remains Under Review

In light of the recent public concerns regarding the Guam Shipyard operation of the Watts cargo our General Manager Glenn A. Leon Guerrero issued this public statement.

"We understand Watts has taken a different position on the

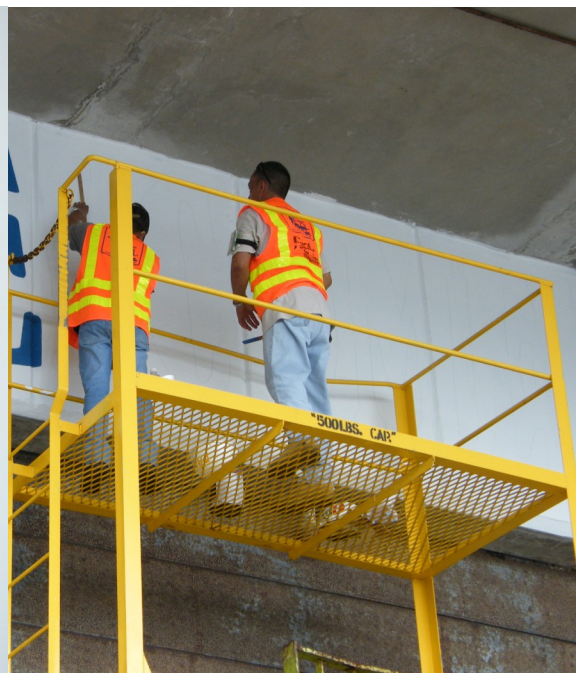
matter and disputes the Port Authority of Guam billings. This matter is of utmost importance as it relates directly to the Government of Guam's lawful control over commercial import/export cargo handling services in Guam, and PAG is working to

address the issues in contention pursuant to local law, the review process outlined therein, and the facts relating to this case. Port Authority of Guam officials will reserve further comment on this matter pending the results of our ongoing legal review."

Facility Maintenance Division Paints Mural



Port employees from the Facility Maintenance Section helped to brighten up Warehouse 2 for the arrival of our cruise ships. Luis Diaz sketched the welcome sign and he was joined by his coworkers to paint the mural. Those who assisted include: Leo Tirador, Melchor Perez, Joaquin Munoz, Shaun Gumataotao, Anthony San Nicolas, Lee Marquez, John Tass and Luis Diaz.



continued from page 1: Cruise Ship Arrivals Begin

The M.S. Asuka II was handled by shipping agent Norton Lilly International. Norton Lilly's Regional Director is Bill Thayer.

Meanwhile, the Port Authority of Guam is already

preparing for the February arrival of the cruise ship Queen Mary 2. She is expected to have nearly 3,000 passengers and 1,200 crew.

The Queen Mary 2 is the flagship of the Cunard

Cruise Lines and is as tall as a 21-story building, more than one hundred feet longer than the Eiffel Tower is tall and more than four city blocks in length.

PAGGMA Christmas Party!





Welcome 2010!!!!!! We gathered some New Year's Resolutions from our Division Heads to share with all of the employees of the Port Authority of Guam. From all of us we want to wish you and your families a prosperous and Blessed Happy New Year!

Glenn Leon Guerrero: "I want to thank the Port family for all the good work and significant progress we made last year. I pray that we stay the course to become a world-class organization and see the modernization fruits continue to crystalize. "

Rick Agustin: "Wishing the port strong employees and families a safe and prosperous new year. focus on mind, body, spirit and heart. stay healthy and happy."

Vivian Leon: "May the New Year for you and your family be the beginning of greater joy and beautiful moments to cherish forever ."

Simon Pinaula: "I'm a fanatic in drinking Coke, I will refrain from coke and drink plenty of WATER!"

Frank Santos: "My New Years wish is that our merciful and loving father in heaven, will continue to extend his love, guidance, protection, and good health to all port employees and their love ones in the year 2010."

Francine Rocio: "God bless all our employees and their families as we bring in the New Year together. We are truly grateful for your dedication and commitment to the Port. We look forward to a prosperous New Year with you. The Human Resources Staff is dedicated to serving you our Port family for the years to come."

Frank C. Roberto: "May the New Year - 2010 bring you happiness, contentment, peace of mind, safe and healthy. 2010 will be a busy year and interestingly challenging but positively to each and everyone's benefit. God Bless and Best Wishes to you and your family."