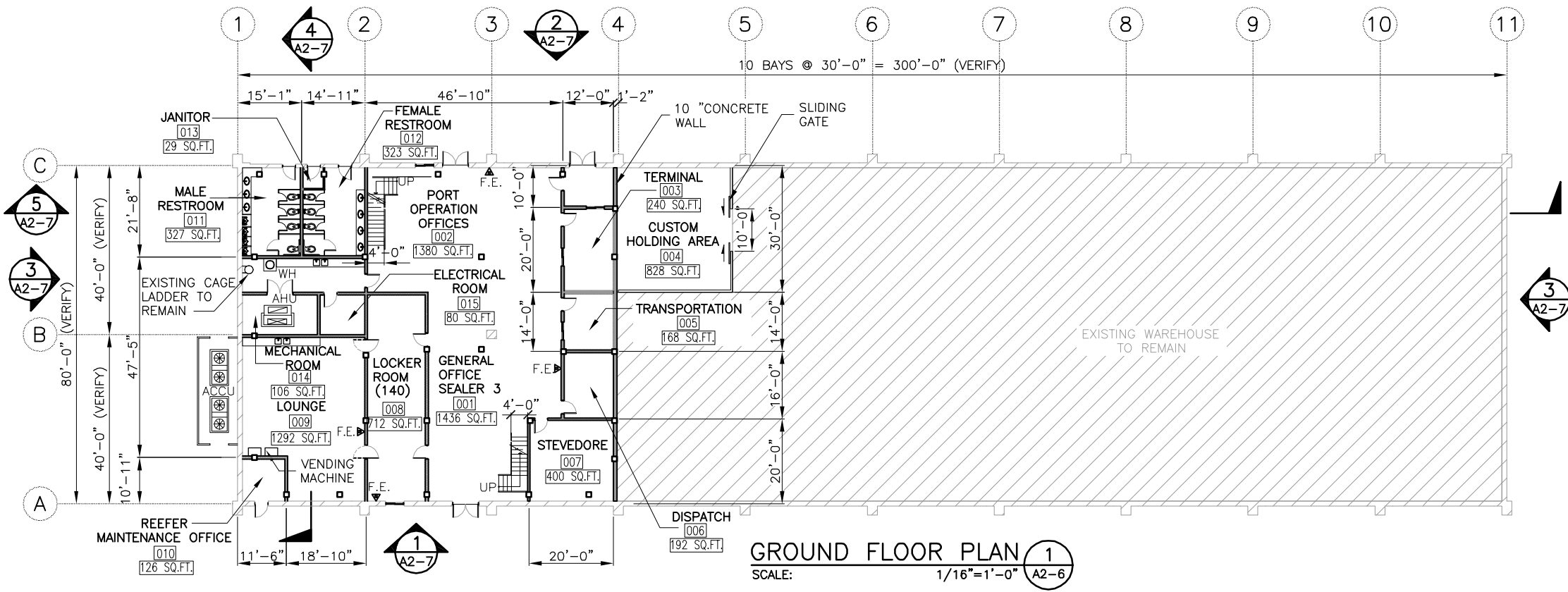
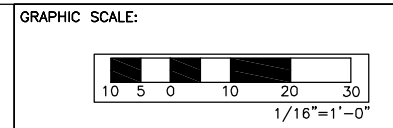
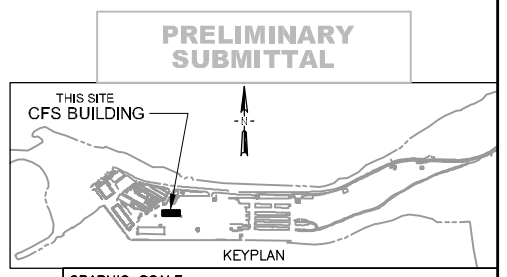
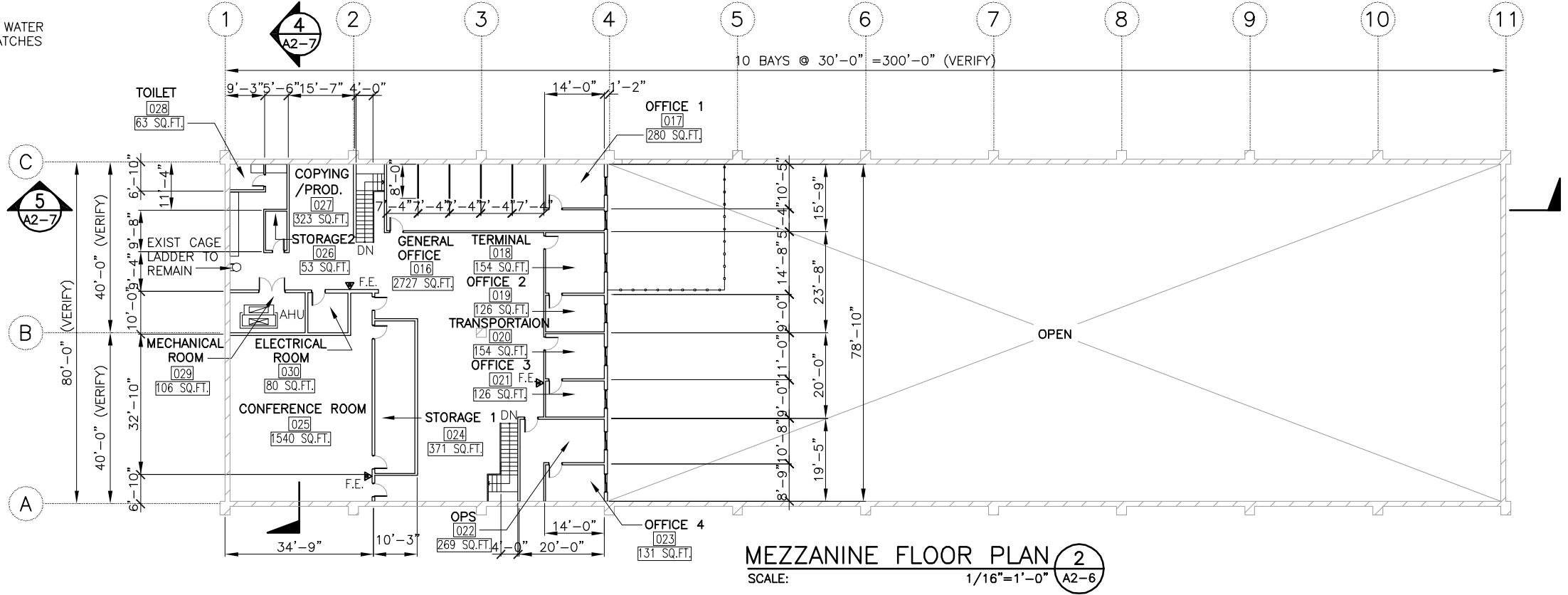


Q:\GEM\WORKING DRAWINGS\CFS Operations Facility\6.16.10\Sheet Files\GEM-A2-6-CFS.dwg Jul 01, 2010 - 11:45am



NOTE:
 PROVIDE WATER
 TIGHT HATCHES



DRAWING REVISIONS			
REVISION	DATE	BY	DESCRIPTION

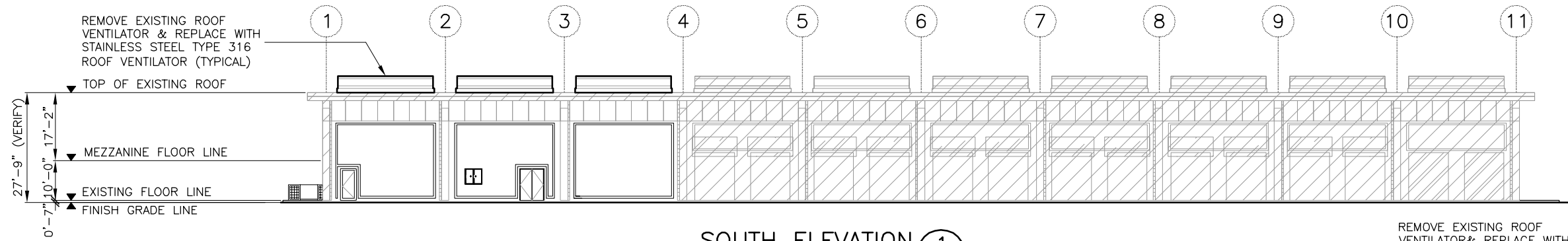
DESIGNER
F. Z. DIAMZON
 DETAILER
H. B. BEGONIA
 CHECKER
F. Z. DIAMZON
 DATE
JULY 2010



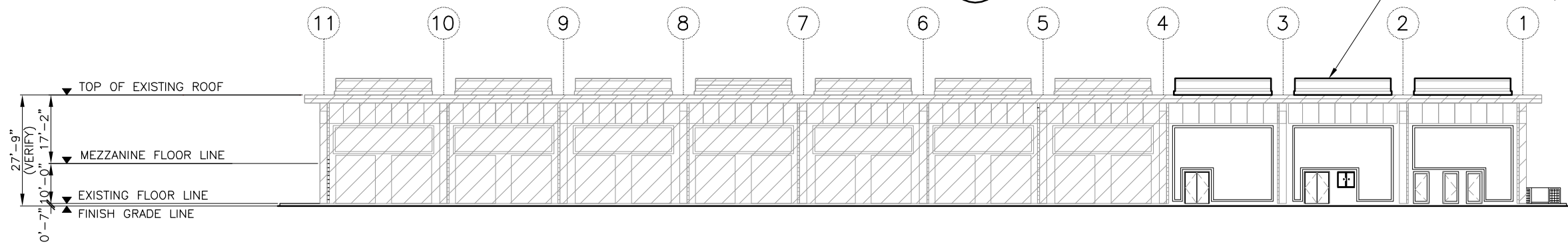
**JOSE D. LEON GUERRERO COMMERCIAL PORT
 PORT AUTHORITY OF GUAM
 MODERNIZATION AND EXPANSION PROGRAM**
 CFS OPERATIONS FACILITY
 GROUND FLOOR PLAN
 MEZZANINE FLOOR PLAN

DRAWING NO.
A2-6
 SHEET NO.
252
 TOTAL SHEETS
375

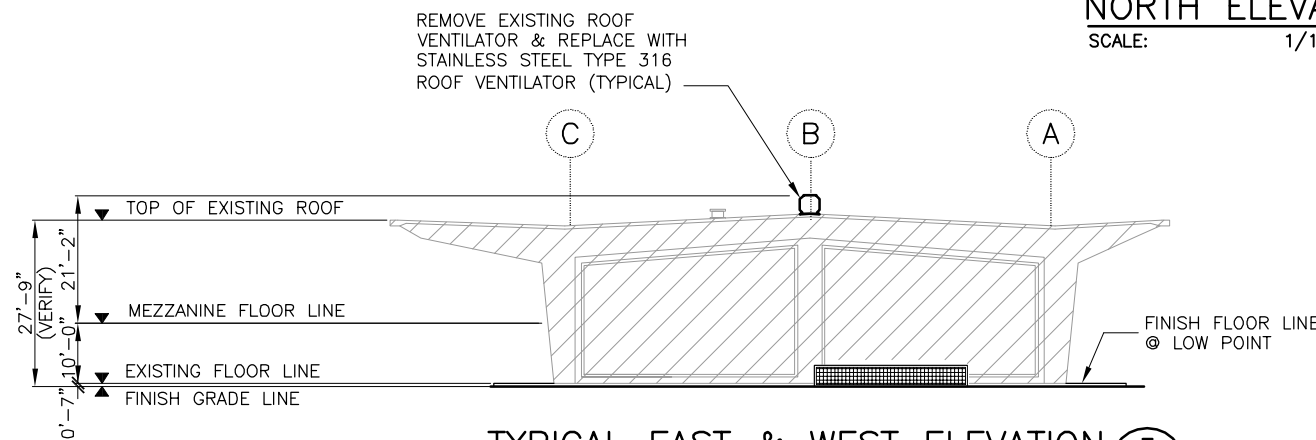
Q:\GEM\WORKING DRAWINGS\CFS Operations Facility\6.16.10\Sheet Files\GEM-A2-7-CFS.dwg Jul 01, 2010 - 11:46am



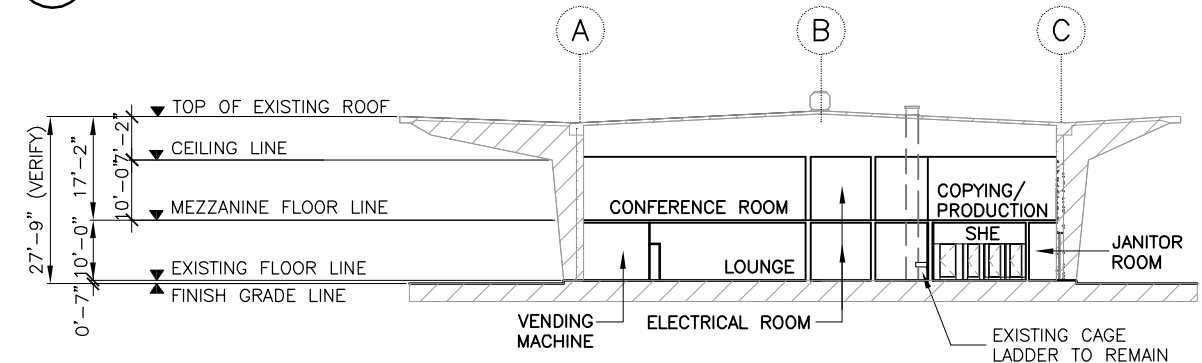
SOUTH ELEVATION 1
SCALE: 1/16"=1'-0" A2-6



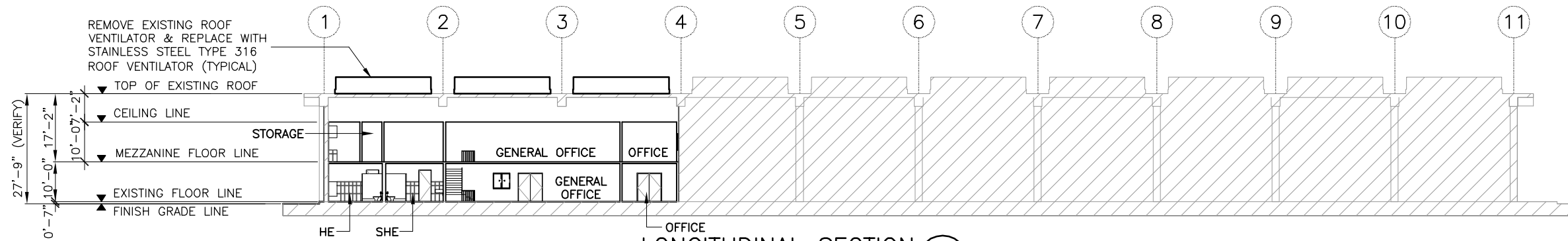
NORTH ELEVATION 2
SCALE: 1/16"=1'-0" A2-6



TYPICAL EAST & WEST ELEVATION 3
SCALE: 1/16"=1'-0" A2-6

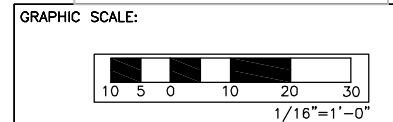


CROSS SECTION 4
SCALE: 1/16"=1'-0" A2-6



LONGITUDINAL SECTION 5
SCALE: 1/16"=1'-0" A2-6

PRELIMINARY SUBMITTAL



DRAWING REVISIONS			
REVISION	DATE	BY	DESCRIPTION

I HEREBY CERTIFY THAT THIS PLAN WAS PREPARED BY ME OR UNDER MY DIRECT SUPERVISION.

DESIGNER
F. Z. DIAMZON
DETAILER
H. B. BEGONIA
CHECKER
F. Z. DIAMZON
DATE
JULY 2010



JOSE D. LEON GUERRERO COMMERCIAL PORT
PORT AUTHORITY OF GUAM
MODERNIZATION AND EXPANSION PROGRAM
CFS OPERATIONS FACILITY
SOUTH & NORTH ELEV., TYPICAL EAST & WEST ELEV.
CROSS SECTION, LONGITUDINAL SECTION

DRAWING NO.
A2-7
SHEET NO.
253
TOTAL SHEETS
375

Port Modernization Program Project

DESCRIPTION	TYPE OF WORK	QUANTITY	UNIT	RAW COST
<i>Container Freight Station (CFS) Operations Facility</i>	Renovation	24,000	SF	\$ 1,242,149.00
SUBTOTAL RAW COST				\$ 1,242,149.00
COST ADJUSTMENT FACTORS				TOTAL COST
SUBTOTAL				\$ 1,242,149.00
1. Area Cost Factor Adjustment				\$ 32,792.73
SUBTOTAL				\$ 1,274,941.73
2. Supervision, Inspection & Overhead				\$ 82,871.21
SUBTOTAL				\$ 1,357,812.95
3. Contingency				\$ 407,343.88
TOTAL 1				\$ 1,765,156.83
4. Planning and Design				\$ 123,560.98
TOTAL 2				\$ 1,888,717.81
MARAD (3%)				\$ 56,661.53
TOTAL 3				\$ 1,945,379.34
Guam Receipt Tax (GRT) (4.167%)				\$ 81,063.96
TOTAL CONSTRUCTION COST (FY 2012)				\$ 2,026,443.30
TOTAL PROGRAM COST				\$ 2,026,443.30
COST ADJUSTMENT FACTORS		% AMOUNT		
1. Area Cost Factor		2.640		
2. Supervision, Inspection and Overhead (SIOH) Factor (%)		6.500		
3. Contingency Factor (%)		30.000		
4. Planning and Design Factor (%)		7.000		