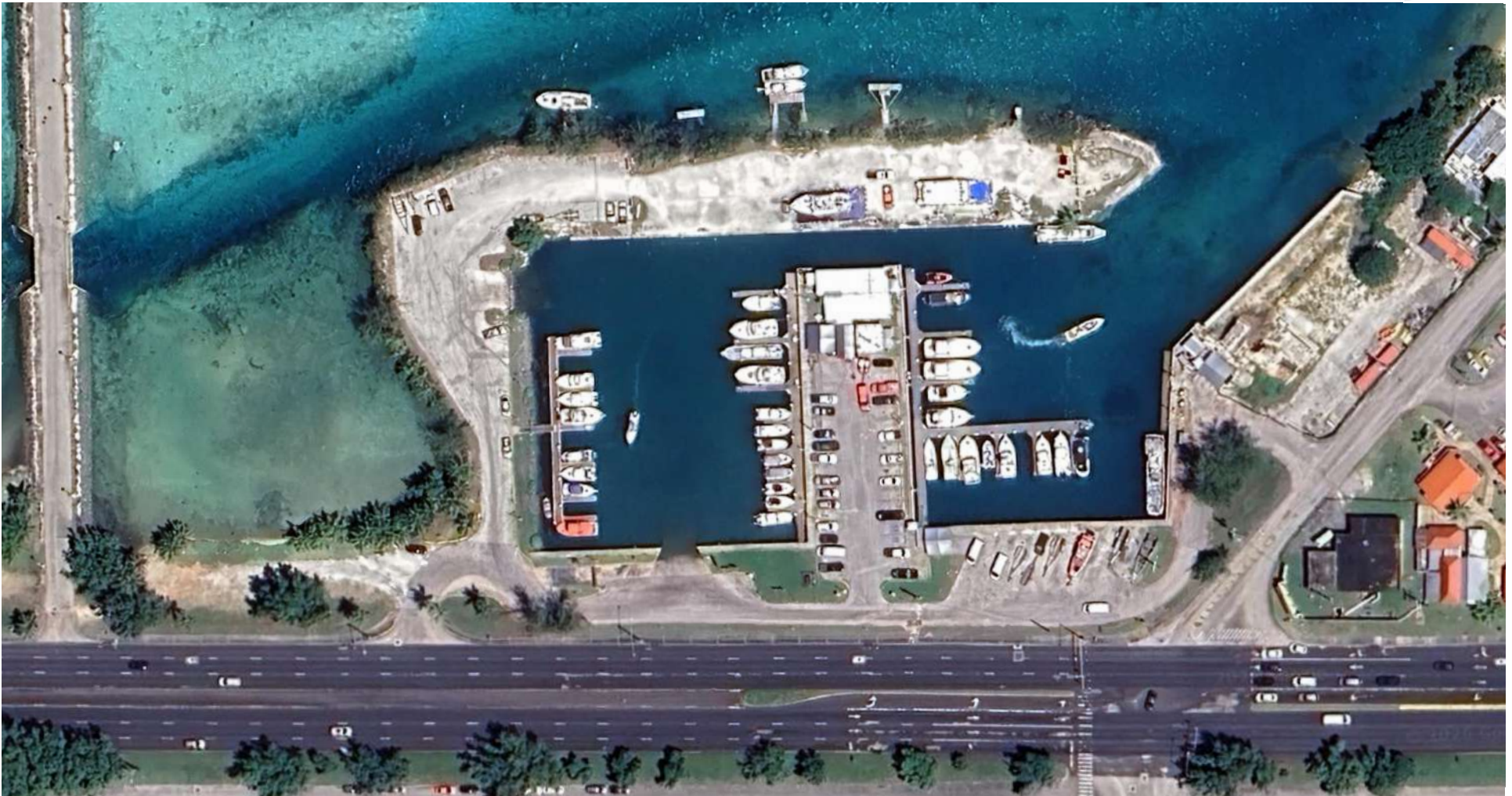


# PORT AUTHORITY OF GUAM

## Agana Marina



### Marina Features and Amenities

#### Marina Access

- Three gated docks with secured access
- Launch ramp and docking access
- Short-term and long-term berthing options

#### Slip Availability

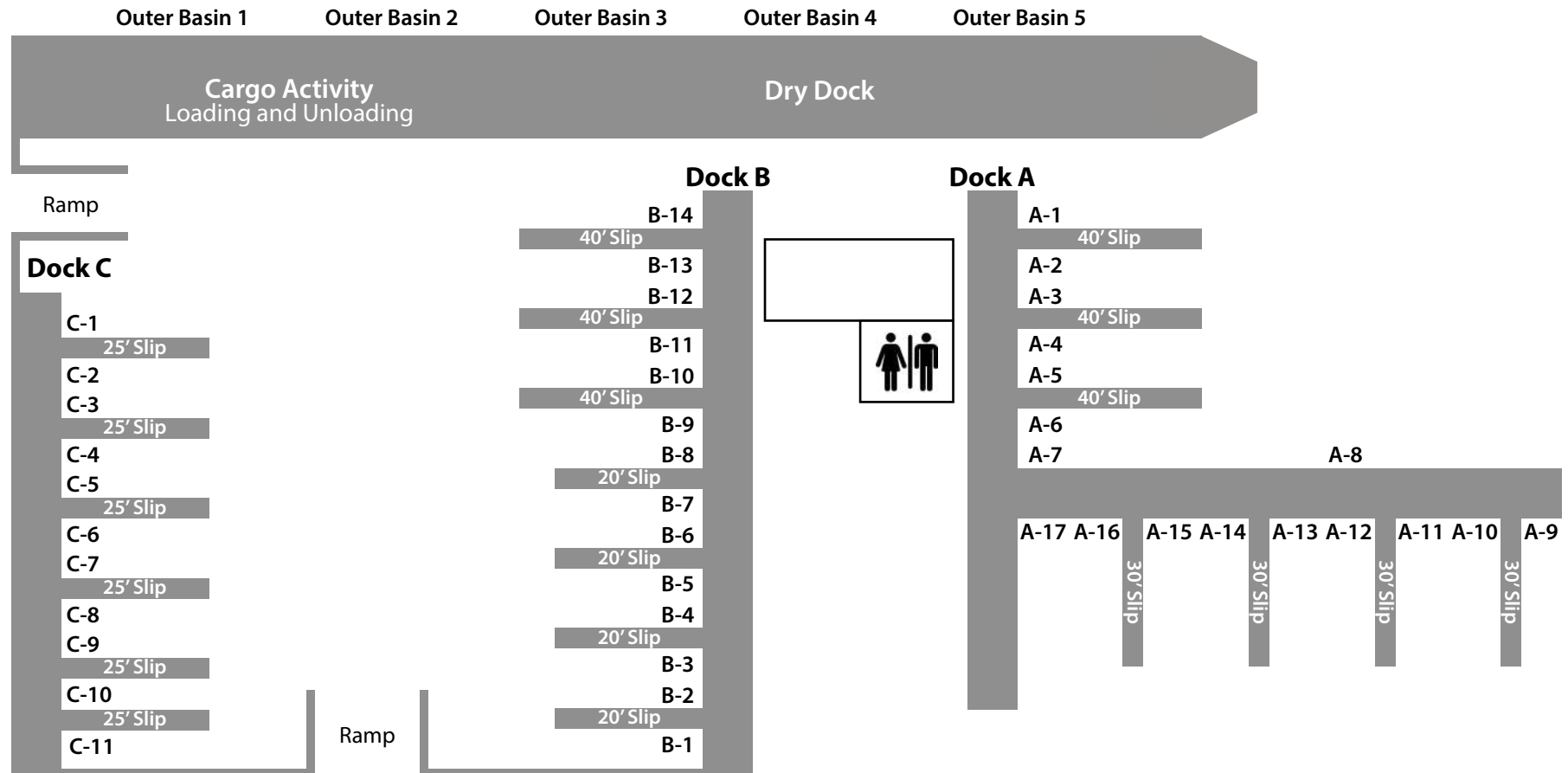
- 13 - 40' slips
- 11 - 30' slips
- 11 - 25' slips
- 8 - 20' slips

#### Marina Amenities

- Power and water available at slip
- On-site restroom and shower facilities
- Tenant trash disposal area
- Coin-operated washdown station

# PORT AUTHORITY OF GUAM

## Agana Marina Facilities and Rates



### Marina Use Information

- Slips are assigned by the Commercial Division
- Slip assignments are based on vessel size and availability
- All vessels must display a valid Use Permit
- Gates must remain secured at all times
- Liveaboard occupancy requires additional approval
- All use permits expire at the end of the calendar year

[Click here for current availability.](#)

### Recreational Slip Fees Commercial Slip Fees Live Aboard Slip Fees

\* Deposit required equal to one month's slip fee

Slip Length	Per Month	Slip Length	Per Month	Slip Length	Per Month
20'	\$40.00	20'	\$70.00	20'	\$120.00
25'	\$50.00	25'	\$87.50	25'	\$150.00
30'	\$60.00	30'	\$105.00	30'	\$180.00
40'	\$80.00	40'	\$140.00	40'	\$240.00
Outer Basin	\$1.50 sq. ft.	Outer Basin	\$2.50 sq. ft.	Outer Basin	\$5.00 sq. ft.