



PORT OF GUAM
 ATURIDATI PUETTON GUAHAN
Jose D. Leon Guerrero Commercial Port
 1026 Cabras Highway, Suite 201, Piti, Guam 96925
 Telephone: 671-477-5931/35 Facsimile: 671-477-2689/4445
 Website: www.portguam.com



Lourdes A. Leon Guerrero
 Governor of Guam
 Joshua F. Tenorio
 Lieutenant Governor

February 04, 2021

Multi-Step Invitation for Bid: IFB-PAG-CIP-021-002

Design/Demolition Bid for Demolition Removal/Proper Disposal of 5 Port Inoperable Cranes and Optional Removal/Proper Disposal of One Barge YFN 816 Along Wharf F6

AMENDMENT No. 1

1. Amend to OMIT verbiage on page 5 of 122,
 4. PRE-QUALIFICATION OF BIDDERS, Section D. *The PAG will request the next phase pricing bids from those short-listed bidders determined to have best met the criteria set above.*
2. Amend IFB packet to include "Volume 5" Specification and Drawings section page, please insert the "Volume 5" cover page between page 79 and page 80 of IFB packet.
3. Amend IFB packet to include in Volume 5 - Specifications and Drawings, the attached Gantry 2 Demolition Plan drawings. No drawings for Gantry 3, however, see attached drawings of Gantry 4 for reference, as arrangement drawings are similar to Gantry 3. (see attached 1 ea. drawing for Gantry 2 and 2 ea. drawings of Gantry 4 for reference for Gantry 3).
4. Amend IFB packet to include quay deck drawings of demolition area. (see attached drawings).
5. Amend IFB packet to include drawings of above ground and below ground services (see attached drawings).

All others remain unchanged.


 RORY J. RESPICIO
 General Manager

Please acknowledge and send via email to jrarceo@portofguam.com , and pagprocurement@portofguam.com .
Name:
Signature:
Company:
Date:

VOLUME 5
SPECIFICATIONS AND DRAWINGS

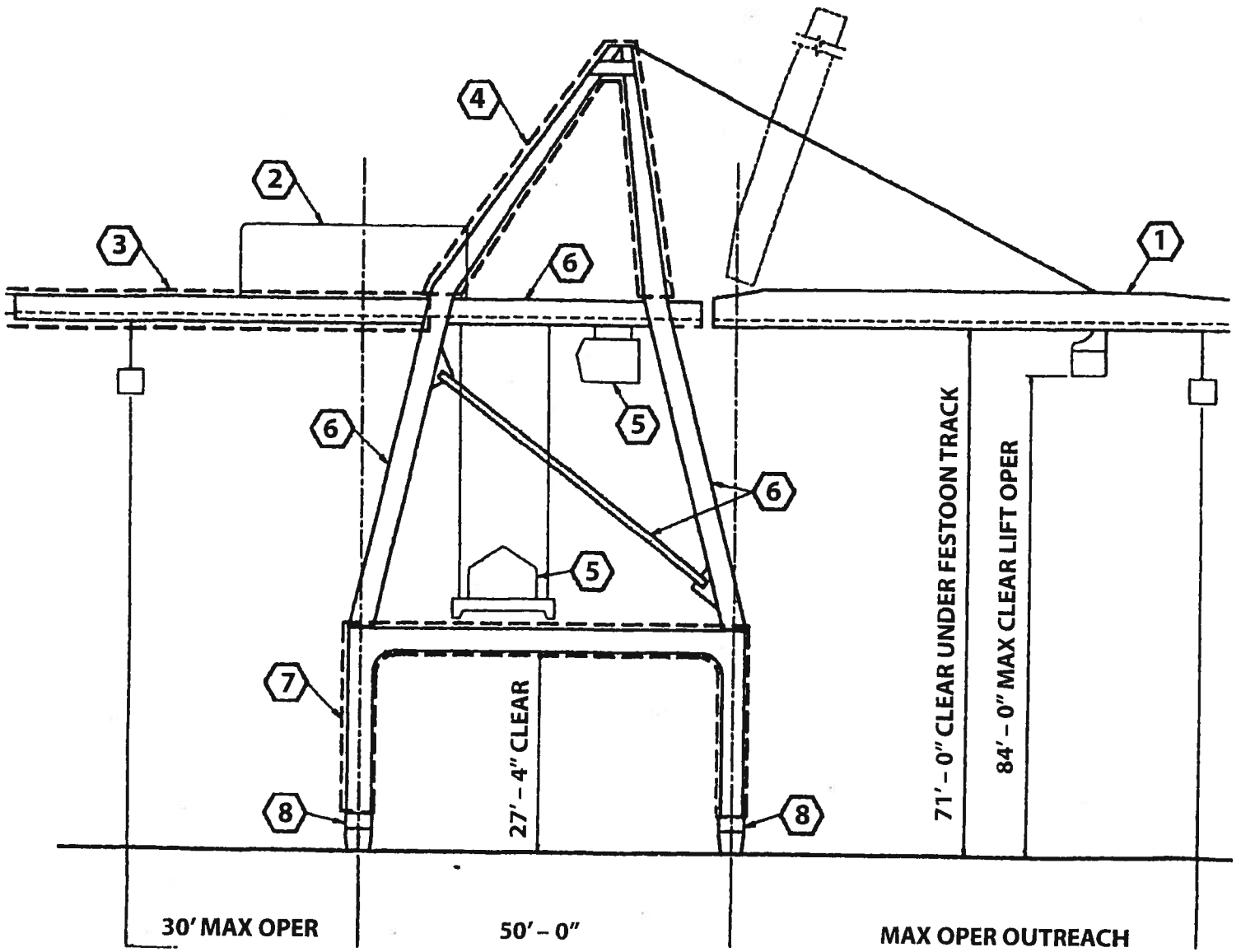
GANTRY 2 DEMOLITION PLAN

SITE PREPERATION

- Install safety barricade around Gantry, approximately 200' x 200'
- Tie down gantry at designated location

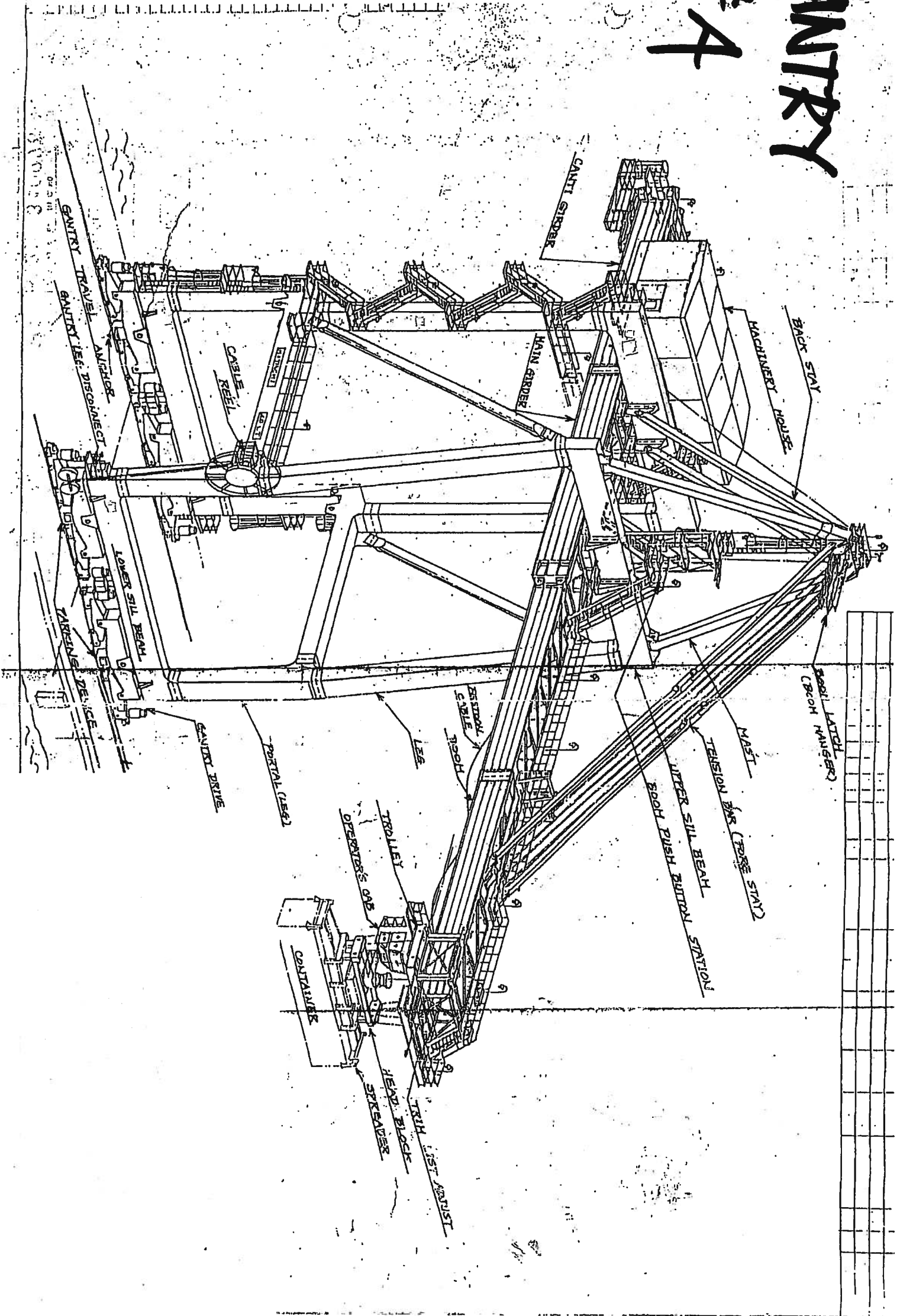
DEMOLITION SEQUENCE

1. Remove Boom Assembly including Forestays and wire ropes.
2. Remove Machinery House including platform for Main Hoist, platform for Trolley Drive and Boom Hoist and Generator and Platform.
3. Remove Trolley Beam with Trolley rail including rear Sheaves and access Walkways.
4. Remove Upper Frame Cross Tie with Boom Hoist Sheaves including the upper portion of center gantry leg, from the top post to just above the center frame cross tie.
5. Remove Cab and Lifting Beam with hoist block (spreader).
6. Remove Center Frame Cross Tie including middle portion of Center Gantry Leg up to just above the lower Gantry Leg and Braces.
7. Remove Lower Gantry Frame up to just above the Lower Frame Cross Tie (2 each).
8. Remove Lower Frame Cross Tie(2 each)



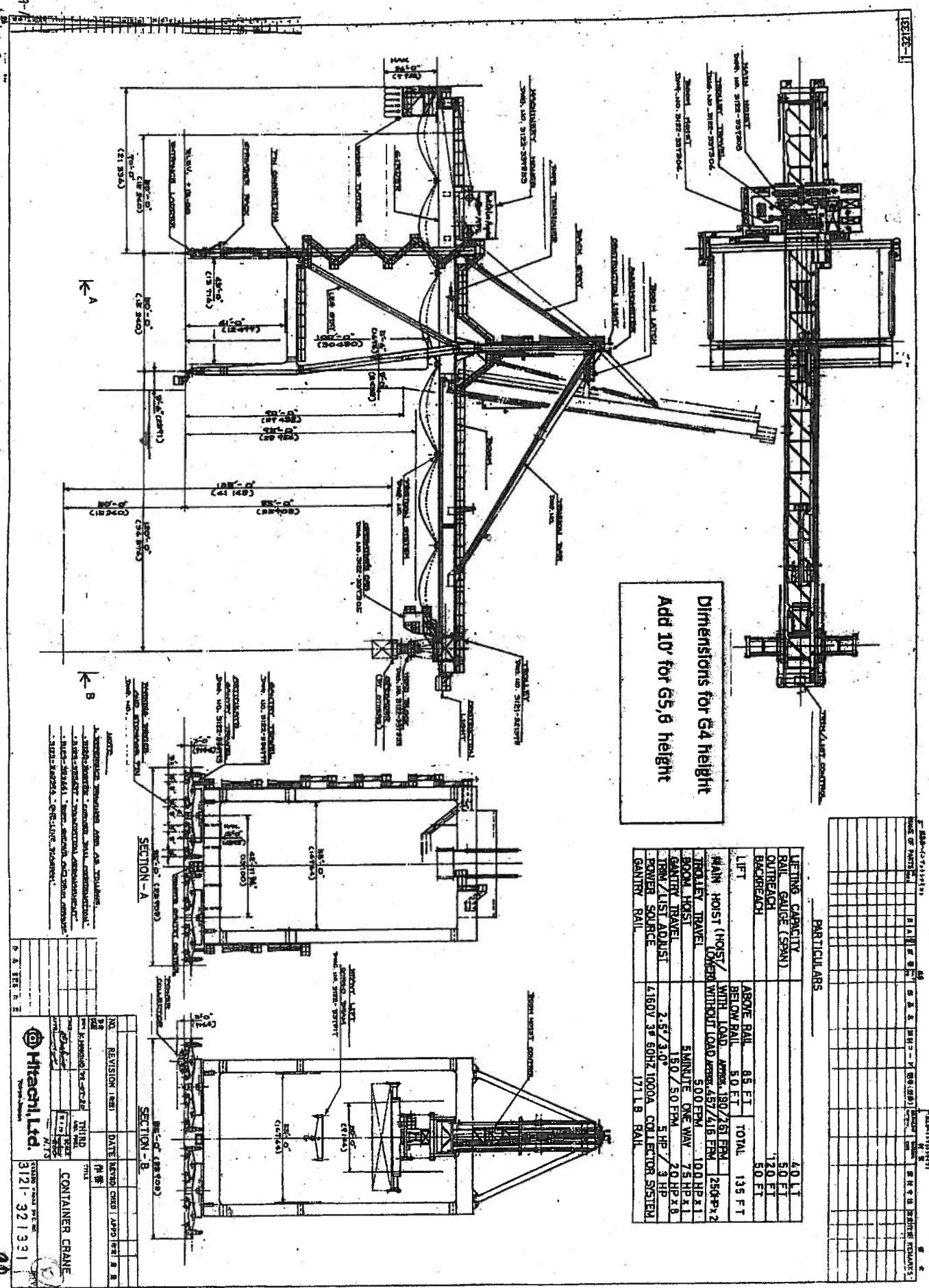
GANTRY

A



GANTRY

#4



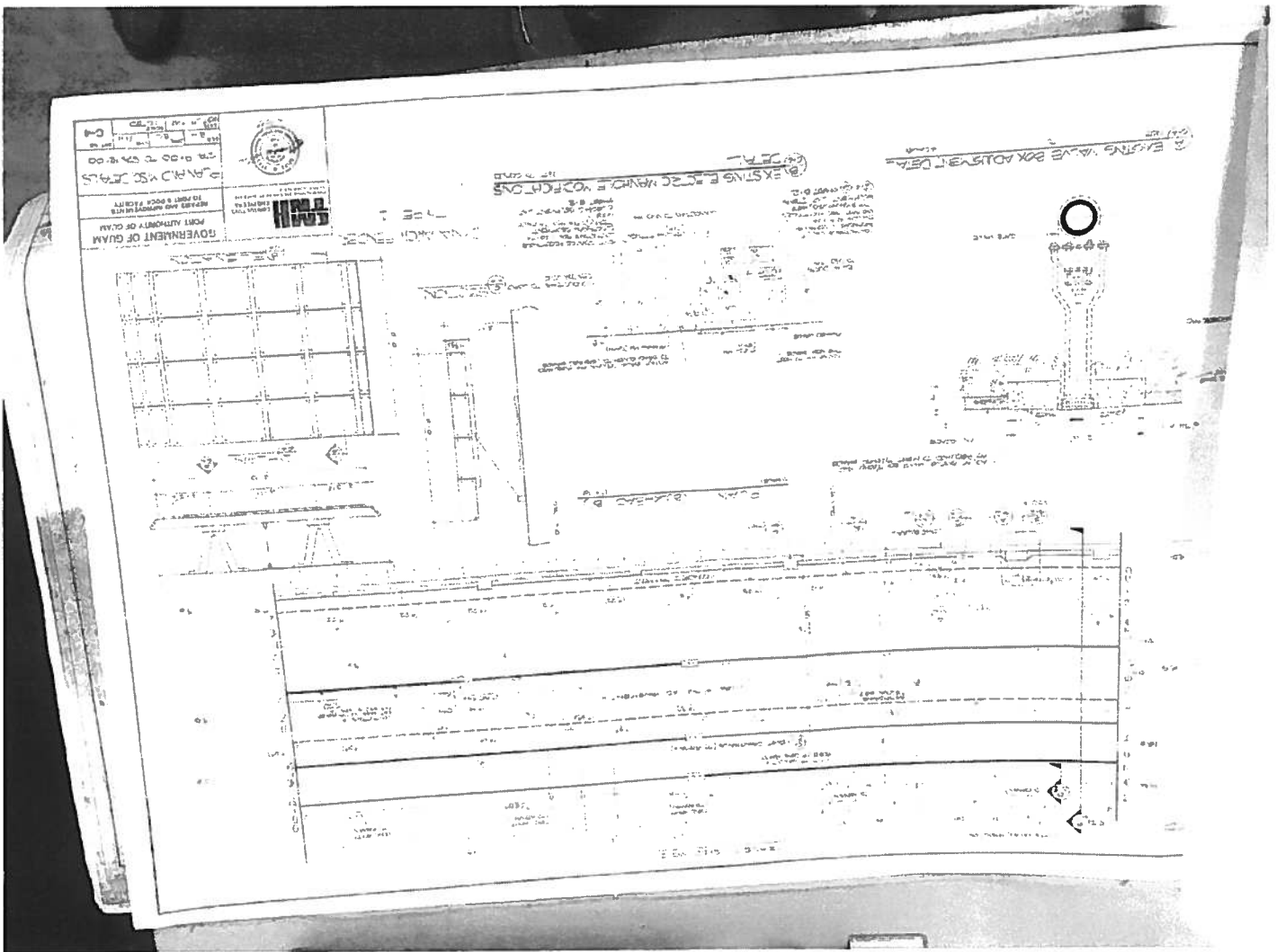
Dimensions for G4 height
Add 10' for G5, 6 height

PARTICULARS		ABOVE RAIL	TOTAL
LIFTING CAPACITY		40 T	
RAIL GAUGE (SPAN)		50 FT	
OUTREACH		120 FT	
BACKREACH		50 FT	
LIFT		85 FT	135 FT
MAIN HOIST (HOIST)			
WITH LOAD ABOVE RAIL	190/261 FPM		2504*P2
WITHOUT LOAD ABOVE RAIL	457/418 FPM		
HOIST TRAVEL			
MINUTE	5.00 FPM		100 HP X 1
GANTRY TRAVEL	150 / 5.0 FPM		75 HP X 1
TRM/LIST ADJUST	2.57/3.0"		5 HP / 3 HP
POWER SOURCE	4180V 3 ϕ 60HZ 1000A COLLECTOR SYSTEM		
GANTRY RAIL	171 LB RAIL		

REV.	DATE	REVISION

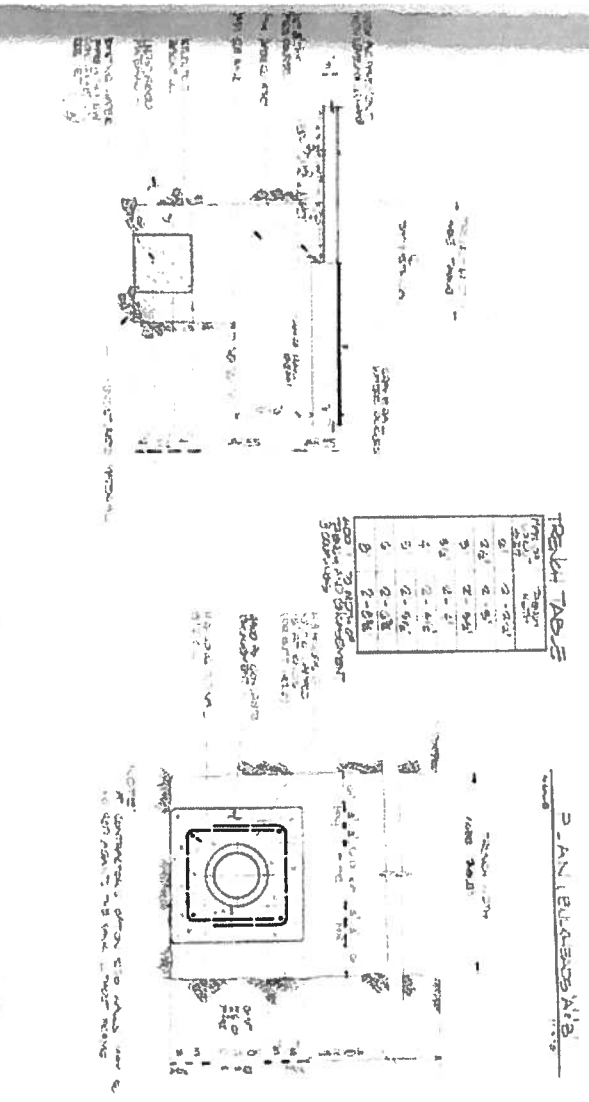
Hitachi, Ltd.
 3121-321391
 CONTAINER CRANE

DOCK DRAWINGS

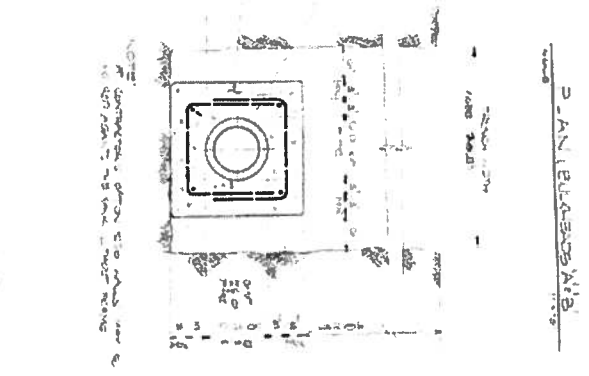


DOCK DRAWINGS

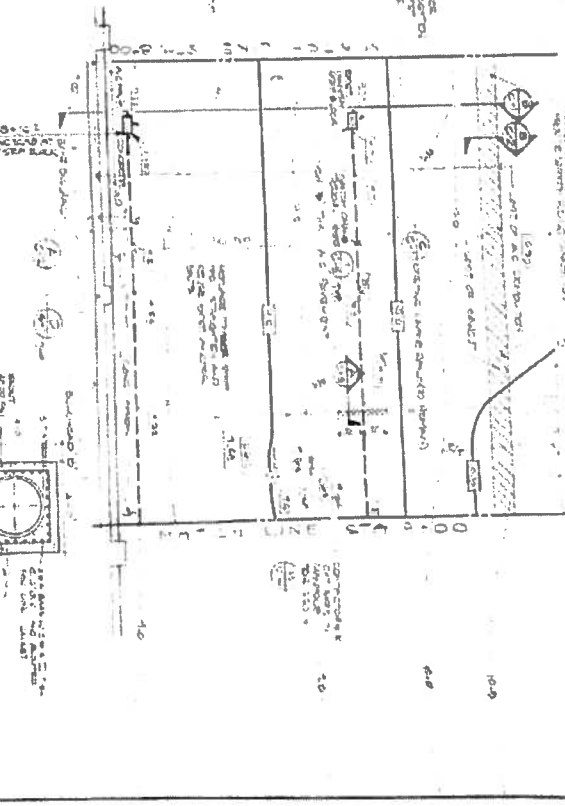
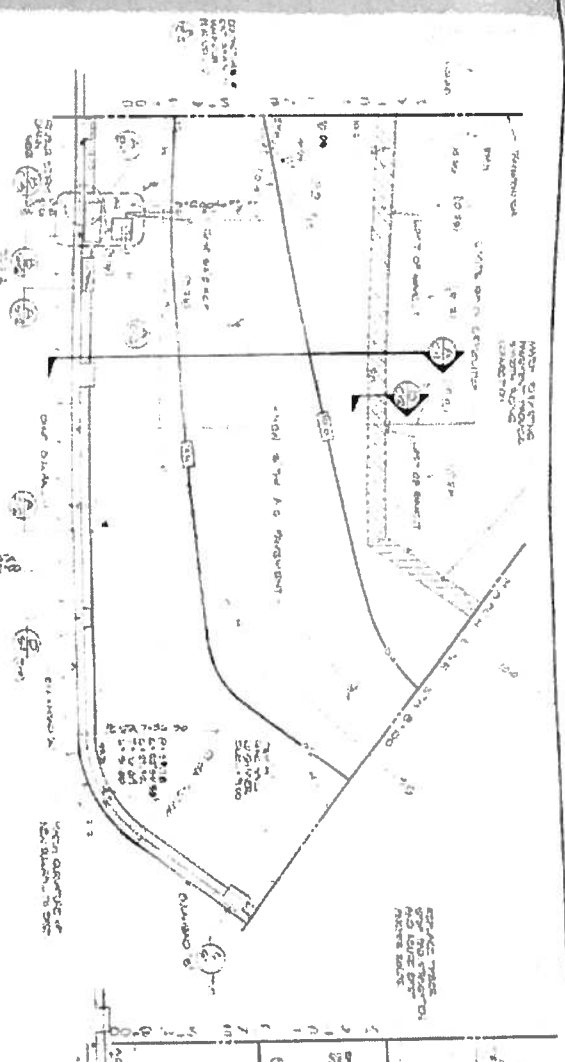
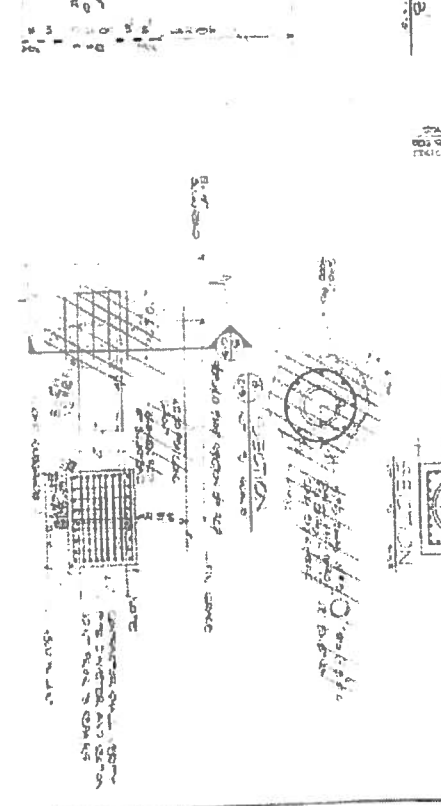
1) TYPICAL WATER ONE REECH DETAIL




2) DETAIL OF CONCRETE JOCKET



3) STORM DRAIN REAR DETAIL





GOVERNMENT OF GUAM
 PORT AUTHORITY OF GUAM
 REPORT FOR THE DOCK FACILITY
 5th FLOOR, 575, HANOVER ST., GUAM
 DATE: 10/15/13
 DRAWN BY: [Name]
 CHECKED BY: [Name]
 SCALE: 1/8" = 1'-0"
C-3