

Port Authority of Guam
Request for Quotation

RFQ No.: RFQ-PAG-021-009-CIP

Spot Corrosion Removal/Paint Repair of Mobil Pipeline Maintenance

Spot Corrosion Removal and Painting of All Water/Fuel Pipelines at the Corroded Locations Specially at the Welded Joints, Gate Valves, Flanges, 2" Fire Hose Connection Repairs, Replacement of all Corroded Bolts and Nuts with SS Type, and Spalling Repair of the Concrete Pipe Support Columns and Beams.

Project Location:

This project is partly located inside the Mobil Golf Pier Yard starting at the existing valve pit Station (00+00) and extends along Rt. 11 Cabras Island Piti, Guam and ends at the Y-Junction Station (13+61) Approximately.

Project Description:

The Port Authority of Guam is interested in soliciting a Request for Quotation for spot corrosion removal and painting of all water/fuel pipelines (total 4 pipelines 3 each 10" diameter fuel lines and one each 8" diameter fire waterline) at the corroded locations specifically occurring at the welded joints, gate valves, flanges, 2" fire hose riser connection's repairs as required, replacement of all corroded bolts and nuts with SS grade 316, and spalling repair of the concrete pipe support columns and beams.

Project begins at station (00+00) located at the Golf Pier Facility Valve Pit and ends at station (13+61) at the Y-Junction along Route 11. (See attached bid schedule and Photos).

All work shall meet the standard compliance of organizations such as the American National Standard Institute (ANSI), American Society for Testing and Materials (ASTM), **Mobil Global Practices (MGP)**, Underwriter Laboratories (UL) and the Occupational Safety and Health Association (OSHA).

Contractors are encouraged to attend a one-time mandatory site visit. PAG Procurement and Engineering/CIP Division will determine schedule of the site visit.

General Requirements:

1. The contractor shall investigate the project sites, verify existing conditions and measurements prior to submitting its cost proposal. Failure to do so shall not be a cause for additional claims against PAG. Corroded spots that may not appear in the bid schedule are to be painted free of corrosion at no additional cost to PAG.
2. Contractor's personnel assign to this project are required to have a Transportation Worker Identification Credential (TWIC) card and a mandatory attendance for a MARSEC Level briefing as required by Port Police Division;
3. Contractor to submit overall schedule of the project. Contractor is required to submit daily Activity Hazard Analysis (AHA), Daily Construction Production Report and other required documents to obtain Daily Work Permit from Mobil to work inside and outside the Golf Pier;
4. Contractor has to attend a mandatory **Mobil Safety Induction Briefing** conducted by the Mobil Oil Guam safety personnel. All crew must wear their Personnel Protective Equipment (PPE) long sleeve shirt, safety steel toe shoes, hard hats with straps, goggles and face masks.

Port Authority of Guam
Request for Quotation

5. Contractor to submit within 15 days after the NTP issuance, the Schedule of Value, material submittals, submittal status logs, construction schedule and personnel listing for approval by the PAG Engineering office;
6. Contractor has ninety (90) calendar days as the period of performance (POP) to complete this project;
7. Contractor shall be responsible for the daily clean-up of the project site. All other construction debris shall be disposed to a designated approved landfill at no cost to PAG;
8. Contractor shall abide by OSHA regulations, provide safety warning signs and temporary approved barriers within the work area. All workers shall wear their proper Personal Protective Equipment's (PPE) as per Exxon/ Mobil Oil Global Practice;
9. Contractor to submit weekly progress report with 4 ea. photo attached and monthly report to PAG Engineering;
10. Contractor to submit monthly invoice with a deduction of 10% retainage fee to PAG Engineering for review, approval and processing;
11. PAG Engineers to conduct daily inspections of the project site and PAG Safety Div. will conduct random inspection of the project;
- 12. Contractor to take note that during Mobil Vessel Operations no work shall be performed. Contractor to record those non-working days as a basis for time extension to the project POP.**

Scope of Work;

1. The contractor shall investigate the project sites, verify existing conditions and measurements prior to submitting its cost proposal. Failure to do so, shall not be a cause for additional claims against PAG;
2. Contractor shall provide materials, labor, tools and equipment for complete removal of corrosion from the fuel pipelines, gate valves, other types of valves, flanges, welded joints, waterline welded joints, bolts, nuts and while using pneumatic type tools or equivalent as per the Mobil Global Practices;
3. Contractor to apply paint in accordance with Mobil Global Practices, with four (4) coats painting system as follows; First prime coat – zinc rich epoxy paint (Ameron Amercoat 78HB **or approved equal**), 4 -6 mils DFT; Second – Intermediate coat – epoxy (Ameron Amercoat 240, 4 – 6 Mils DFT **or approved equal**); Third stripe coat (Ameron Amercoat 240 HS, 4- 6 Mils DFT **or approved equal**);
Fourth Top coat – Polyurethane (Ameron Amercoat 450 HS, 4 -6 Mils DFT **or approved equal**) and to match existing color of each fuel pipeline. Submit material submittal for approval from PAG Engineering. All pipe markings shall be redone if the corrosion coincides with the pipe markings;
4. Contractor to repair concrete spalls related to the concrete pipe support system, replace corroded nuts with stainless nuts type 316 to match existing and to repaint repaired concrete supports to match the existing colors, See bid schedule and repair detail;

Port Authority of Guam
Request for Quotation

5. Contractor to apply daily hot work permit to Mobil Safety Division for grinding of concrete beams and metal grinding if needed;
6. Contractor to request in writing 24 hrs. prior to pre-final inspection by PAG/CIP Engineering Division for any punch list items;
7. After correction of all punch list items and approval by PAG Engineering. Contractor to submit Final billing invoice and close – out documents;
8. Close-out documents shall include Certificate of Completion, One (1) Year Warranty of materials and the workmanship, Release of Claims and Liabilities. Submit documents in hard copy and in electronic file in PDF format.
9. Copy of a Valid Contractors/Business license.

PROCUREMENT TIMELINES:

RFQ Issue Date:	April 21, 2021
*Mandatory Site-Visit:	9:00 a.m., Friday, April 23, 2021
RFI/Q&C Deadline:	4:00 p.m., Monday, April 26, 2021
Deadline for PAG's Response:	5:00 p.m., Wednesday, April 27, 2021
RFQ Submission Deadline:	3:00 p.m., Friday, April 30, 2021

RFI/Q&C's may be submitted to Attn: Priscilla Rideb at pkrideb@portofguam.com or to Mark Cabrera at macabrera@portofguam.com or pagprocurement@portofguam.com.

*Bidders must send list of names of the participant(s) and a copy of valid ID e.g driver's license, passport, or TWIC card 24-hours prior to site visit via email to pkrideb@portofguam.com or macabrera@portofguam.com. Each participant must have PPE's such as safety shoes, safety vest, hard hat, and face mask as the Port will not provide these items.

RFQ submittal one (1) original and one (1) copy, must be sealed in an envelope and ATTN: Procurement Division with the RFQ number, description, name of company, company address, and contact information by no later than 3:00p.m., Friday, April 30, 2021. Submissions will be accepted at the Procurement Office, Port Admin Bldg. 1st Floor.

Port Authority of Guam
Request for Quotation

PRICE FORM FOR RFQ-PAG-021-009-CIP

<u>DESCRIPTION</u>	<u>QTY</u>	<u>UOM</u>	<u>PRICE</u>
Spot Corrosion Removal/Paint Repair of Mobil Pipeline Maintenance	1	LT	\$ _____

See Itemized on Page 5 and 6.

The undersigned (hereafter called the Bidder), a _____

(Corporation, Partnership or Individual) organized and/or licensed to do business under the laws of _____, hereby proposes and agrees to furnish all the necessary labor, materials, equipment, tools and services necessary for the **RFQ-PAG-021-009-CIP Spot Corrosion Removal/Paint Repair of Mobil Pipeline Maintenance** all in accordance with the specifications prepared by the Port Authority of Guam for the lump sum or unit price(s) set, plus any and all sums to be added and/or deducted resulting from all extra and/or omitted work in accordance with the unit and/or lump sum prices.

If awarded the contract, the undersigned agrees to complete the work within the required contract period as defined in the RFQ documents. The undersigned understands that the Port Authority of Guam reserves the right to reject any or all bids or to waive any informality or technicality in any RFQs in the interest of the Government.

SUBMITTED BY:

(CONTRACTOR)

(BY)

(TITLE)

(BUSINESS ADDRESS)

BID SCHEDULE MOBIL PIPELINES

SPOT RUST REMOVAL OF PIPELINES, FLANGES, VALVES, PRIME/PAINT AFFECTED AREAS, REPLACE CORRODED BOLT/NUTS, PERFORM CONCRETE SPALL REPAIR AS REQ'D pg 1/2				
Station	Item Description	QTY	UNIT	\$ COST
00+00	Remove rust and repaint of MOV Gate Valve	3	EA.	
	Remove rust of fire salt waterline and repaint	1	EA.	
	Replace all corroded bolts and nuts with SS Type 316 As Required		EA.	
	Remove rust and repaint all flanges	4	EA.	
	Remove rust and repaint the Thermal Relief Valves	6	EA.	
00+12	Remove rust spot of deisel fuel line and repaint	1	EA.	
00+55	Remove rust of fire salt waterline and repaint	1	EA.	
	Remove rust spot of deisel fuel line and repaint	1	EA.	
00+87	Remove rust of fire salt waterline welded joint and repaint	1	EA.	
00+94	Remove rust spots of deisel and jet fuel line and repaint	2	EA.	
	Replace corroded nuts	4	EA.	
01+29	Remove rust spots of deisel, jet & unleaded fuel lines and repaint	3	EA.	
	Remove rust spot of fire salt waterline and repaint	1	EA.	
01+68	Remove rust spots and repaint all 4 pipes	4	EA.	
02+05	Remove rust spots of deisel, jet & unleaded fuel line and repaint	3	EA.	
	Remove rust spot of fire salt waterline and repaint	1	EA.	
02+15	Remove rust and repaint of all flanges	4	EA.	
	Replace all corroded bolt and nuts with SS Type 316 As Required		EA.	
02+69	Replace all corroded bolt and nuts with SS Type 316 As Required		EA.	
02+72	Remove rust and repaint of all flanges	4	EA.	
	Replace all corroded bolt and nuts with SS Type 316 As required		EA.	
02+86	Remove rust on screen, gate valve, corroded nuts and repaint	7	EA.	
03+10	Remove rust spots of deisel, jet, unleaded fuel line and repaint	3	EA.	
	Remove rust of fire salt waterline welded joint and repaint	1	EA.	
03+33	Remove rust spots and of unleaded fuel line and repaint	2	EA.	
03+50	Remove rust spots and repaint all 4 pipes	4	EA.	
03+58	Remove rust spot of jet fuel line and repaint	1	EA.	
03+79	Remove rust spots of deisel, unleaded fuel line, fire waterline & repaint	3	EA.	
03+95	Remove rust spot of jet fuel line and repaint	1	EA.	
04+04	Remove rust and repaint 2" Dia. Valve and Fire Hose Connection	1	EA.	
04+15	Remove rust spot of deisel, jet fuel line and repaint	2	EA.	
04+22	Remove rust spots of jet fuel line and repaint	1	EA.	
04+63	Remove rust spots and repaint all 4 pipes	4	EA.	
04+76	Remove rust spot of jet fuel line and repaint	1	EA.	
05+03	Remove rust spots and repaint all 4 pipes	4	EA.	
05+16	Remove rust spot of jet fuel line and repaint	1	EA.	
05+44	Remove rust spots and repaint all 4 pipes	4	EA.	
05+86	Remove rust spots and repaint all 4 pipes	4	EA.	
05+92	Remove rust spot of jet fuel line replce corroded nut and repaint	2	EA.	
06+27	Remove rust and repaint all gate valves	4	EA.	
	Remove rust and repaint of all flanges	4	EA.	
	Replace all corroded bolt and nuts with SS Type 316 As Required		EA.	
	SUBTOTAL COST PAGE 1/2			

BID SCHEDULE MOBIL PIPELINES			
SPOT RUST REMOVAL OF PIPELINES, FLANGES, VALVES, PRIME/PAINT AFFECTED AREAS,			
REPLACE CORRODED BOLT/NUTS, PERFORM CONCRETE SPALL REPAIR AS REQ'D pg 2/2			
06+70	Remove rust spots of deisel, unleaded fuel line, fire waterline & repaint	3	EA.
06+82	Remove and replace rusted nuts	8	EA.
	Remove rust spots of unleaded fuel line and repaint	2	EA.
07+04	Remove rust spot of fire salt waterline welded joint and repaint	1	EA.
07+45	Remove rust spot of fire salt waterline welded joint and repaint	1	EA.
07+65	Remove rust spots of jet, unleaded fuel line and repaint	2	EA.
07+90	Remove rust spot of jet fuel welded joint and repaint	4	EA.
	Remove rust of fire waterline welded joint and repaint	1	EA.
08+05	Remove rust of unleaded welded joint and repaint	1	EA.
08+18	Remove rust of deisel fuel welded joint, corroded nut and repaint	2	EA.
	Remove rust of fire salt waterline welded joint and repaint	1	EA.
	Remove rust and repaint 2" Dia. valve and fire hose connection	1	EA.
08+35	Remove rust spot of jet fuel line and repaint	1	EA.
08+47	Remove rust of unleaded fuel line welded joint and repaint	1	EA.
08+70	Remove rust of fire salt waterline welded joint and repaint	1	EA.
08+87	Remove rust spot of unleaded fuel line and repaint	1	EA.
09+13	Remove rust of fire salt waterline welded joint and repaint	1	EA.
09+29	Remove rust of unleaded fuel line welded joint and repaint	1	EA.
09+52	Remove rust spots of Jet fuel line, fire salt waterline and repaint	2	EA.
09+69	Remove rust spots of deisel and unleaded fuel line and repaint	2	EA.
09+96	Remove rust and repaint 2" Dia. valve and fire hose connection	1	EA.
	Remove rust spot of jet fuel line and repaint	2	EA.
10+36	Remove rust of fire salt waterline welded joint and repaint	1	EA.
10+53	Remove rust spots of deisel and unleaded fuel line and repaint	2	EA.
10+60	Remove rust of jet fuel line welded joint and repaint	1	EA.
10+76	Remove rust of fire salt waterline welded joint and repaint	1	EA.
10+94	Remove spot rust of unleaded fuel line and repaint	1	EA.
11+59	Remove rust of fire salt waterline welded joint and repaint	1	EA.
11+79	Remove rust of unleaded and jet fuel line welded joint and repaint	2	EA.
12+00	Remove rust of fire salt waterline welded joint and repaint	1	EA.
12+13	Remove rust and repaint 2" Dia. valve and fire hose connection	1	EA.
12+21	Remove rust of jet fuel line welded joint and repaint	1	EA.
12+43	Remove rust of fire salt waterline welded joint and repaint	1	EA.
12+84	Remove rust of fire salt waterline welded joint and repaint	1	EA.
13+00	Remove rust of fire salt waterline welded joint and repaint	1	EA.
	Remove rust spots of jet and unleaded fuel line and repaint	2	EA.
13+19	Repair of concrete colum spall	2	SF
13+42	Repair of concrete colum spall	2	SF
13+61	Remove rust and repaint all gate valves	4	EA.
	Remove rust and repaint all flanges	8	EA.
	Replace all corroded bolt and nuts with SS Type 316 As Required		EA.
	SUBTOTAL COST PAGE 2/2		
	GRAND TOTAL COST		

PROJECT LOCATION PLAN



GENERAL NOTES

5.0 SAFETY RULES AND REGULATIONS:

- 5.1 WORK AND WORKING CONDITIONS SHALL CONFORM TO REQUIREMENTS OF ALL CODES INCLUDING SPECIFIC RULES AND REGULATIONS ESTABLISHED AT THE FACILITY BY MOBIL OIL GUAM, INC. AND PAG.

12.0 SPECIAL CONDITIONS:

- 12.1 WORK SCHEDULE SHALL BE ARRANGED TO PROVIDE A MINIMUM OF PRODUCT SERVICE INTERRUPTION AND SUCH INTERRUPTION AS MAY BE NECESSARY SHALL BE ARRANGED AND COORDINATED WITH THE END-USER, ALL SERVICE INTERRUPTIONS SHALL BE MADE AT A TIME AND SCHEDULE AS APPROVED AND ACCEPTED BY THE END-USER, ALL TOOLS AND MATERIALS REQUIRED FOR SUCH MODIFICATIONS AND CONNECTIONS SHALL BE AT JOB SITE READY FOR USE AT TIME OF SERVICE INTERRUPTION SO AS NOT TO DELAY SERVICE REINSTATEMENT.
- 12.2 BEFORE MODIFICATION, EXTENSION, OR TIE-IN TO EXISTING WORK SYSTEMS, TEST SUCH EXISTING WORK AND SYSTEMS BEFORE CONNECTIONS ARE MADE TO ASCERTAIN THE OPERATING CONDITIONS BEFORE MODIFICATION ARE MADE. ANY MALFUNCTION SHALL BE REPORTED TO THE OWNER. TEST ALL SUCH WORK AND SYSTEM AFTER CONNECTION ARE MADE TO INSURE PROPER OPERATION AS WHOLE THE WORK UNDER THIS CONTRACT SHALL INCLUDE THE RESPONSIBILITY OF CORRECTING ANY WORK OR EQUIPMENT FAILS TO OPERATE CAUSED BY THE INTERCONNECTION OF THE NEW WORK TO THE EXISTING.

14.0 PAINTING:

- 14.1 THE SURFACE PREPARATION AND PAINTING SHALL BE DONE IN ACCORDANCE WITH EXXONMOBIL GLOBAL PRACTICES. ALL NEW CARBON STEEL PIPES AND STRUCTURAL SUPPORTS ARE TO BE PAINTED WITH A FOUR-COAT PAINTING SYSTEM AS FOLLOWS. 1ST PRIME COAT - ZINC RICH EPOXY PAINT (AMERON AMERCOAT 78 HB), 4-6 MILS DFT; 2ND INTERMEDIATE COAT - EPOXY (AMERON AMERCOAT 240, 4-6 MILS DFT); 3RD STRIPE COAT - (AMERON AMERCOAT 240 HS, 4-6 MILS DFT); 4TH TOP COAT - POLYURETHANE (AMERON AMERCOAT 450 HS, 4-6 MILS DFT). CONTRASTING COLORS SHOULD BE USED FOR EACH COAT. THE TOP COAT FOR PRODUCT LINES SHALL BE WHITE AND FIRE PROTECTION LINES SHALL BE RED. ALL LINES SHALL BE LABELED PER THE PROJECT DRAWINGS.

15.0 SAFETY:

- 15.1 THE PROJECT SITE IS DESIGNATED AS DRUG, ALCOHOL, AND FIREARMS-FREE
- 15.2 SMOKING AT PROJECT SITE IS NOT ALLOWED EXCEPT IN DESIGNATED SMOKING AREAS
- 15.3 CONTRACTOR SHALL COMPLY WITH PAG AND MOBIL'S SAFETY REQUIREMENTS INCLUDING SPECIFIC SAFETY WORK PERMIT REQUIREMENTS, PRACTICES, AND WORK RULES
- 15.4 PRIOR TO INITIATION OF FIELD CONSTRUCTION ACTIVITIES, ALL OF THE CONTRACTOR'S EMPLOYEES, SUBCONTRACTORS AND EMPLOYEES, AND FREQUENT VISITORS ARE REQUIRED TO GO THROUGH MOBIL'S SPECIFIC SAFETY ORIENTATION.
- 15.5 CONTRACTOR SHALL PREPARE JSA (JOB SAFETY ANALYSIS) FOR ALL CONSTRUCTION TASKS, WHICH SHALL BE REVIEWED WITH THE WORKERS PERFORMING THE TASK. A COPY OF THE JSA SHALL BE SUBMITTED TO MOBIL, ATTACHED TO THE SAFETY WORK PERMIT

REINFORCING STEEL

1. ALL REINFORCING BARS SHALL CONFORM TO BASIC DESIGN CRITERIA SPECIFIED BELOW.
2. REINFORCING BARS SHALL BE SPLICED $42d$ (d = BAR DIAMETER) ONLY AS INDICATED ON THE DRAWINGS.
3. PROVIDE DOWELS IN FOOTINGS AND/OR GRADE BEAMS THE SAME SIZE AND SPACING AS COLUMN AND WALL REINFORCING, UNLESS OTHERWISE NOTED.
4. MINIMUM CONCRETE COVER FOR REINFORCING BARS SHALL BE:

CONCRETE CAST AGAINST EARTH	3"
EXPOSED TO EXTERIOR OR WEATHER	1 1/2"
FORMED SURFACE BELOW GRADE	2"
SLAB ON GRADE	2"
COLUMNS & BEAMS	1 1/2"
5. ANCHOR BOLTS, DOWELS AND OTHER EMBEDDED ITEMS ARE TO BE SECURELY TIED IN PLACE BEFORE CONCRETE IS POURED.
6. ALL REINFORCING BAR BENDS SHALL BE COLD BENT PER ACI 315.
7. SHOP DRAWINGS: THE CONTRACTOR SHALL SUBMIT SHOP DRAWINGS FOR REINFORCING STEEL PREPARED IN ACCORDANCE WITH ACI 315. INDICATE BENDING DIAGRAM, ASSEMBLY DIAGRAM, SPLICING AND LAPS OF RODS AND SHAPES DIMENSIONS AND DETAILS FOR REINFORCING BARS.
8. ALL WELDING SHALL BE PERFORMED BY OPERATORS WHO HAVE BEEN QUALIFIED PREVIOUSLY BY TEST AS PER AWS "STANDARD QUALIFICATION PROCEDURE" TO PERFORM TYPE OF WORK REQUIRED. ALL FIELD WELDING SHALL BE CLEARED BY EXXONMOBIL FIELD ENGINEER DURING FIELD WELDING. STRICT SAFETY MEASURES SHALL BE TAKEN TO ASSURE THE SAFETY OF THE WORKMEN AND EXISTING EQUIPMENT AND STRUCTURES

**PAG ENGINEERING DIVISION VISUAL INSPECTION
MOBILE PIPELINE PROJECT STATION (00+00)**



Station (00+00)
Valve Pit Area Inside Mobil Facility



Paint the Three Corroded MOV
Valves and the Fire Saltwater Line
Gate Valve



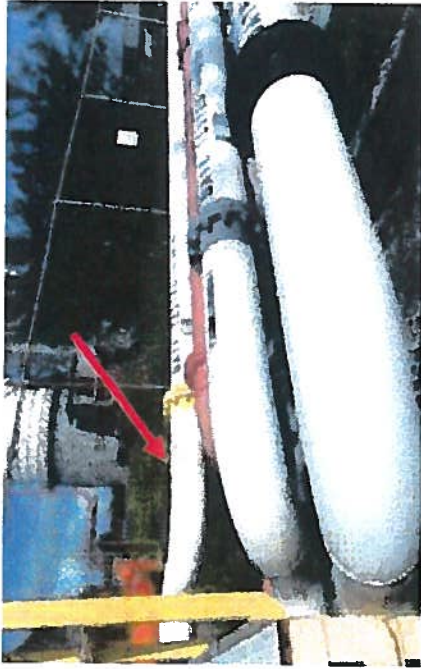
Replace Corroded Bolts & Nuts as
Required & Repaint All Flanges



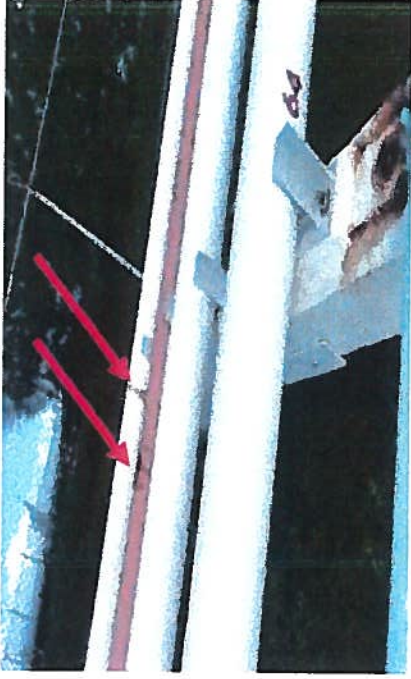
- 10" DIA. Diesel Fuel Line
- 8" DIA. Fire Salt Water Line
- 10" DIA. Jet Fuel Line
- 10" DIA. Unleaded Gasoline Line

General Pipelines Orientation (Arrangement)
Inside Mobil Facility and Outside Along Route 11

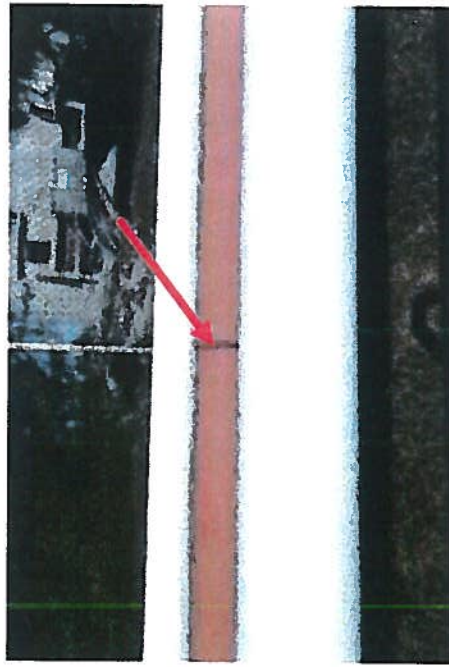
**PAG ENGINEERING DIVISION VISUAL INSPECTION
MOBILE PIPELINE PROJECT STATIONS (00+12) ~ (00+94)**



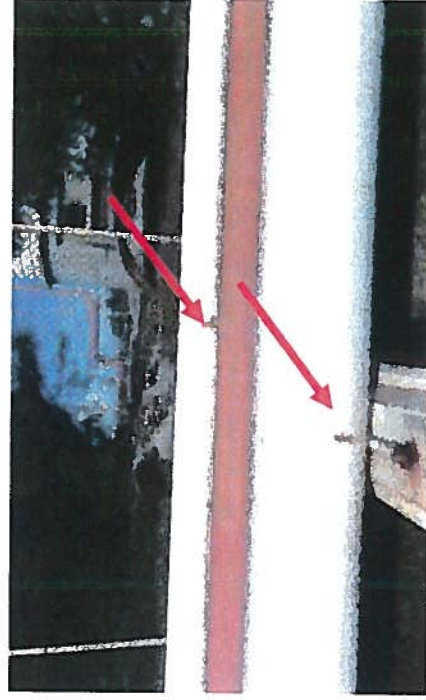
Station 00+12 Corrosion of Diesel Fuel Pipeline



Station 00+55 Corrosion of Diesel Fuel Pipeline
and Fire Water line

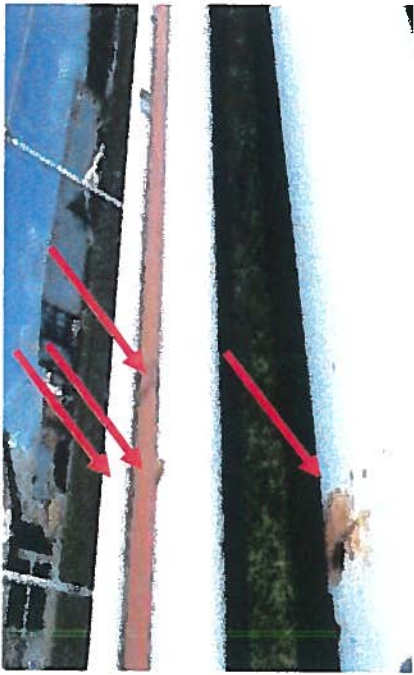


Station 00+87 Corrosion of Fire Waterline Pipe

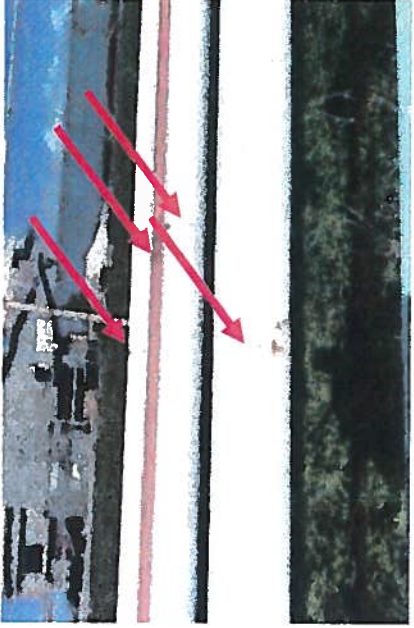


Station 00+94 Corrosion of Diesel, Jet Fuel Pipelines and
corroded nut.

**PAG ENGINEERING DIVISION VISUAL INSPECTION
MOBILE PIPELINE PROJECT STATIONS (01+29) ~ (02+15)**



Station 01+29 Corrosion of All 4ea. Pipelines



Station 01+68 Corrosion of All 4ea. Pipelines



Station 02+05 Remove Corrosion and Paint All
Pipesipeline

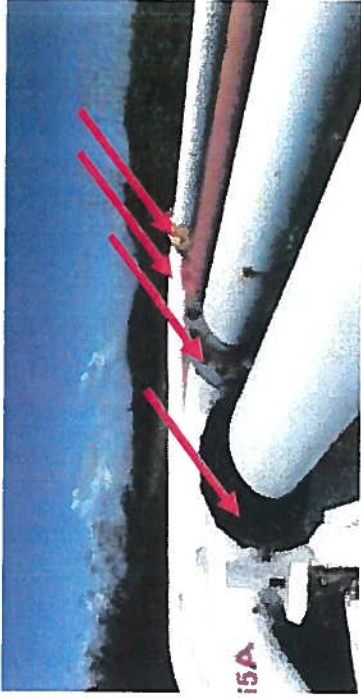


Station 02+15 Replace Corroded Bolts-Nuts Re-Paint All
Pipeline Flanges

**PAG ENGINEERING DIVISION VISUAL INSPECTION
MOBILE PIPELINE PROJECT STATIONS (02+ 69) ~ (03+10)**



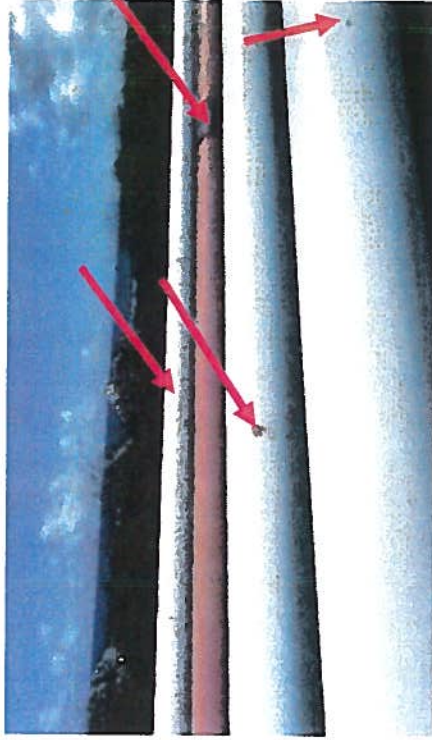
**Station 02+69 Replace Corroded Bolts/Nuts & Paint
all Flanges**



Station 02+72 Re-paint of all 4ea. Pipeline Flanges



**Station 02+86 Re-paint 3ea Screen, Gate Valve and
corroded nut**



Station 03+10 Corrosion of All 4 Pipelines

**PAG ENGINEERING DIVISION VISUAL INSPECTION
MOBILE PIPELINE PROJECT STATIONS (03+33) ~ (03+79)**



Station 03+33 Corrosion of Unleaded Gasoline Pipeline and Joint.



Station 03+50 Corrosion of All 4 Pipelines



Station 03+58 Corrosion of Jet Fuel Pipeline



Station 03+79 Corrosion of 3ea. Pipelines

**ENGINEERING DIVISION VISUAL INSPECTION
MOBILE PIPELINE PROJECT STATIONS (03+95) ~ (04+22)**



Station 03+95 Corrosion of Jet Fuel Pipeline



Station 04+04 Corrosion of Fire Salt Waterline
Gate Valve & Fire Hose Connection



Station 04+15 Corrosion at 2ea. Pipelines



Station 04+22 Corrosion of Jet Fuel Pipeline

**PAG ENGINEERING DIVISION VISUAL INSPECTION
MOBILE PIPELINE PROJECT STATIONS (04+63) ~ (5+16)**



Station 04+63 Corrosion of All 4 Pipelines



Station 04+76 Corrosion of Jet Fuel Pipeline



Station 05+03 Corrosion At All 4 Pipelines



Station 05+16 Corrosion At Jet Fuel Pipeline

**PAG ENGINEERING DIVISION VISUAL INSPECTION
MOBILE PIPELINE PROJECT STATIONS (05+44) ~ (06+27)**



Station 05+44 Corrosion At All Pipelines



Station 05+86 Corrosion of All 4ea. Pipelines

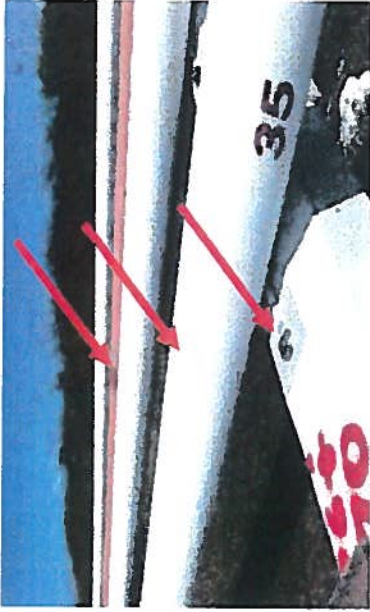


Station 05+92 Corrosion of Jet Fuel Pipeline
and Replacement of Corroded nut

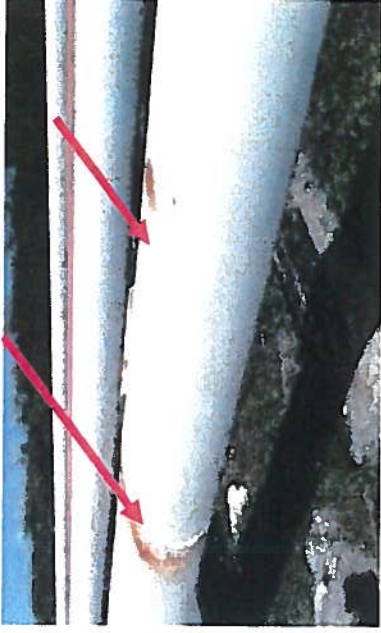


Station 06+27 Corrosion At All Gate Valves

**PAG ENGINEERING DIVISION VISUAL INSPECTION
MOBILE PIPELINE PROJECT STATIONS (06+70) ~ (07+45)**



Station 06+70 Corrosion of Fire Saltwater Pipeline,
Unleaded Gasoline Pipeline and corroded nut



Station 06+82 Corrosion At two Locations
of the Unleaded Gasoline Pipeline



Station 07+04 Corrosion of Fire Saltwater Line

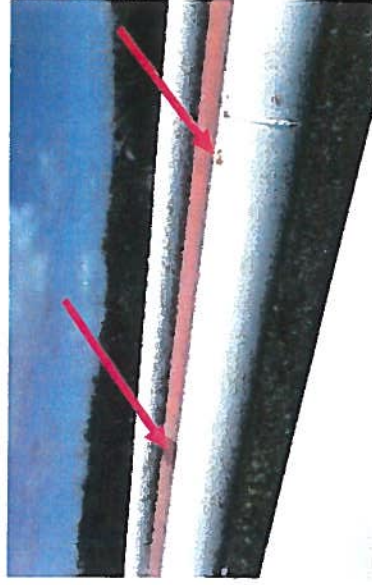


Station 07+45 Corrosion of Fire Salt Waterline

**PAG ENGINEERING DIVISION VISUAL INSPECTION
MOBILE PIPELINE PROJECT STATIONS (07+65) ~ (08+18)**



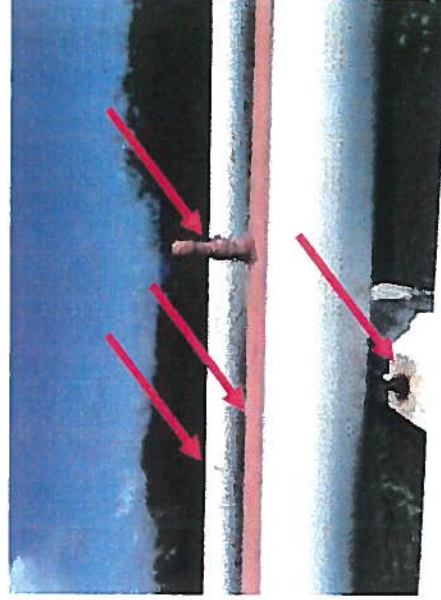
Station 07+65 Corrosion of Jet Fuel Line and Unleaded Gasoline Pipeline.



Station 07+90 Corrosion of Fire Saltwater Line and Unleaded Gasoline Pipeline.

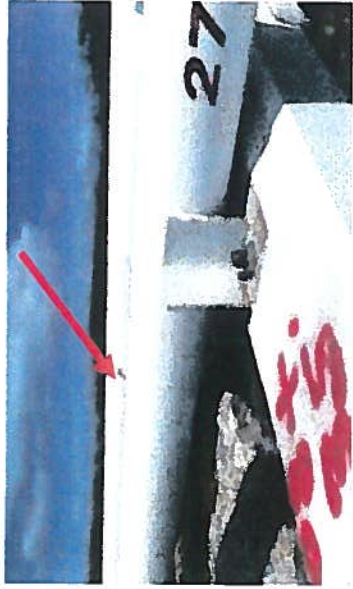


Station 08+05 Corrosion of Unleaded Fuel Pipeline

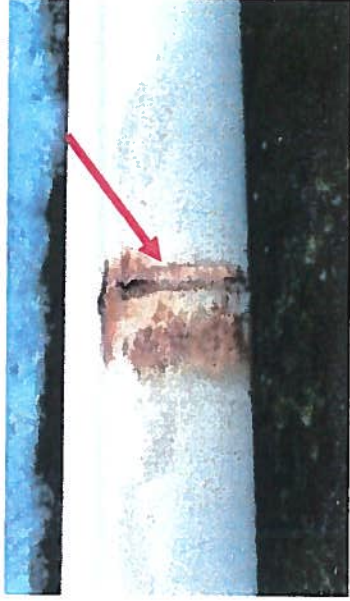


Station 08+18 Corrosion At 3ea Pipelines and The Corroded nut.

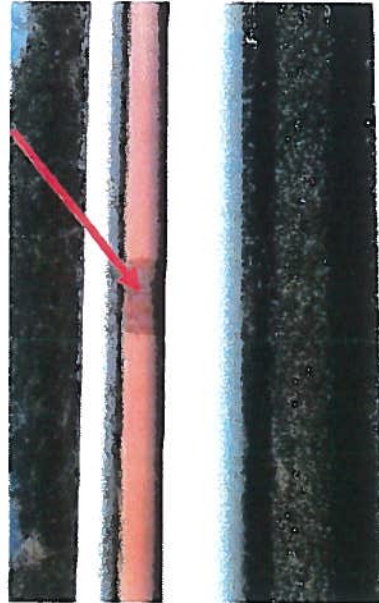
**PAG ENGINEERING DIVISION VISUAL INSPECTION
MOBILE PIPELINE PROJECT STATIONS (08+35) ~ (08+87)**



Station 08+35 Corrosion of Jet Fuel pipeline



Station 08+47 Corrosion of the Welded Joint of the Unleaded Pipeline

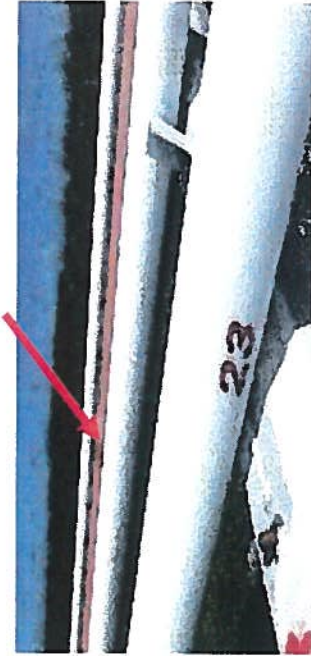


Station 08+70 Corrosion of Fire Salt Waterline



Station 08+87 Corrosion of Unleaded Gasoline Pipeline at the Joint

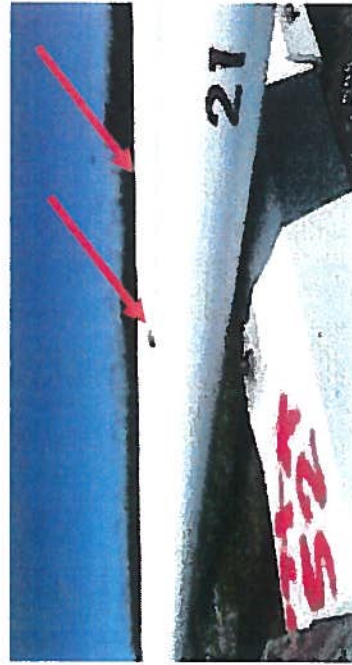
**PAG ENGINEERING DIVISION VISUAL INSPECTION
MOBILE PIPELINE PROJECT STATIONS (09+13) ~ (09+69)**



**Station 09+13 Corrosion of Fire
Saltwater Line**



**Station 09+29 Corrosion of Welded Joints Unleaded
Gasoline Pipeline**

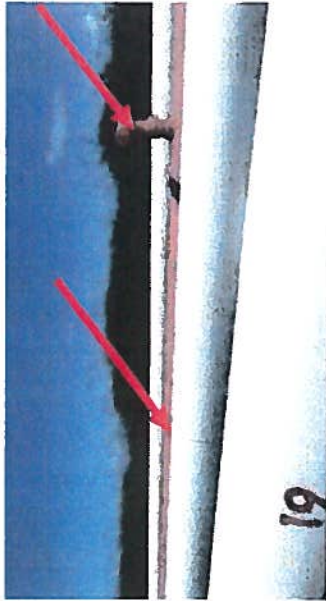


**Station 09+52 Corrosion of Fire Salt Waterline
and Fuel Jet Pipeline**

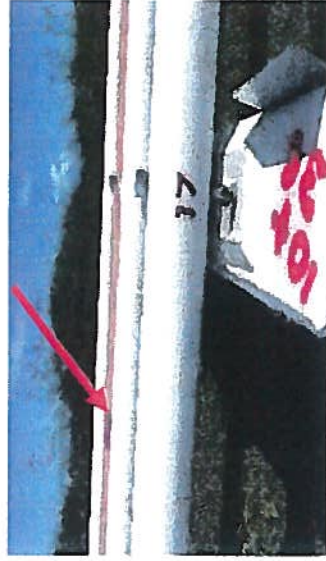


**Station 09+69 Corrosion of Diesel Pipeline and
Unleaded Gasoline Line**

**PAG ENGINEERING DIVISION VISUAL INSPECTION
MOBILE PIPELINE PROJECT STATIONS (09+96) ~ (10+60)**



Station 09+96 Corrosion of Fire Salt Waterline and the 2" Dia. Gate Valve/Hose Connection and the Jet Fuel Pipeline,



Station 10+36 Corrosion of Fire Salt Waterline



Station 10+53 Corrosion of Diesel and Unleaded Gasoline Pipelines



Station 10+60 Corrosion of Jet Fuel Pipeline

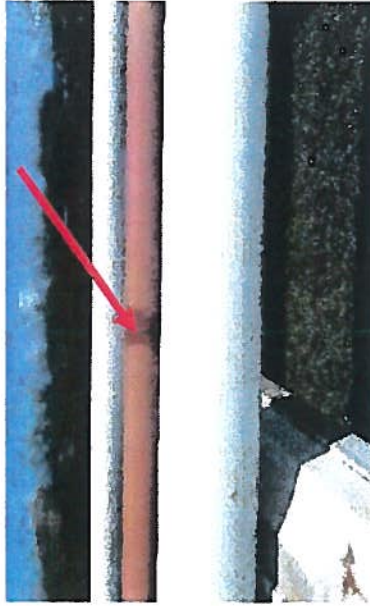
**PAG ENGINEERING DIVISION VISUAL INSPECTION
MOBILE PIPELINE PROJECT STATIONS (10+76) ~ (11+79)**



Station 10+76 Corrosion of Fire Salt Waterline



Station 10+94 Corrosion of Unleaded Gasoline Pipeline

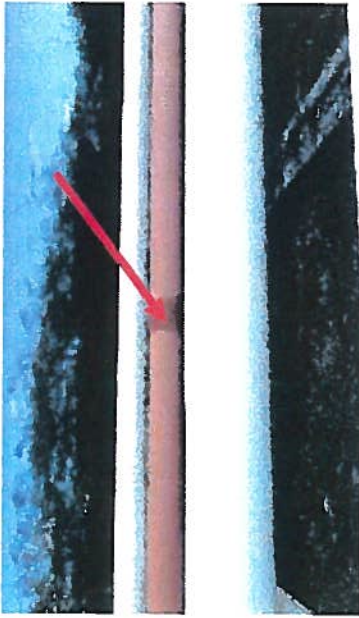


Station 11+59 Corrosion of Fire Salt Waterline

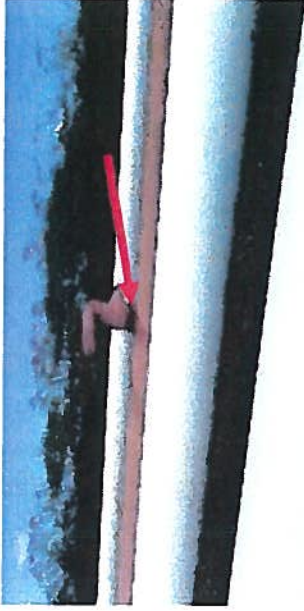


Station 11+79, Corrosion of Welded Joint at the Unleaded Gasoline Pipeline and the Jet Fuel Pipeline

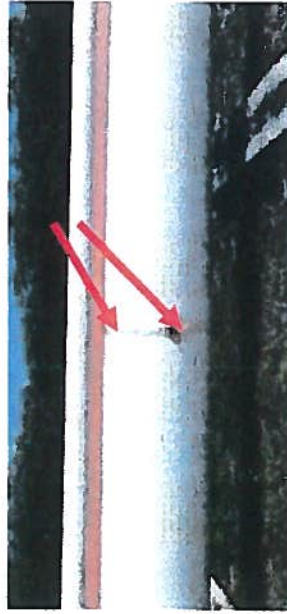
**PAG ENGINEERING DIVISION VISUAL INSPECTION
MOBILE PIPELINE PROJECT STATIONS (12+00) ~ (12+43)**



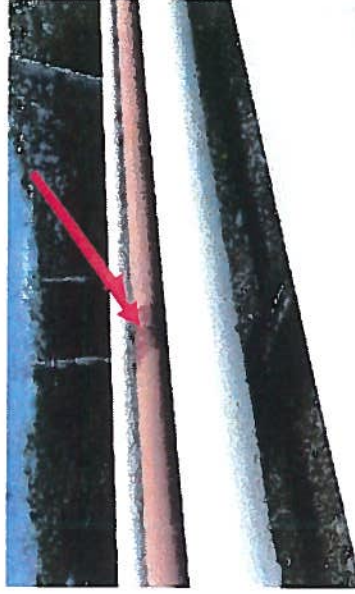
**Station 12+00 Corrosion of Fire Salt
Waterline**



**Station 12+13 Corrosion of Fire Saltwater Line
and 2" Dia. Gate Valve and Hose Connection**

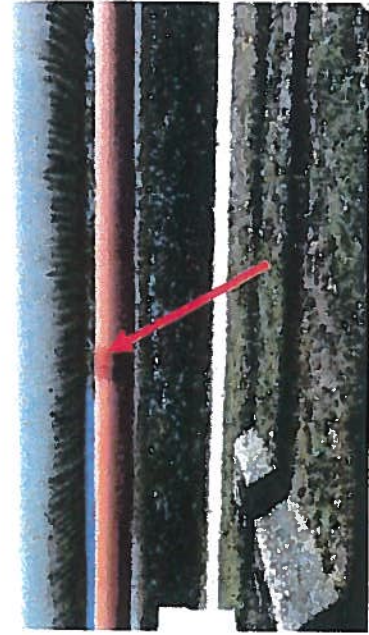


**Station 12+21 Corrosion at two locations of
the Jet Fuel Pipeline**

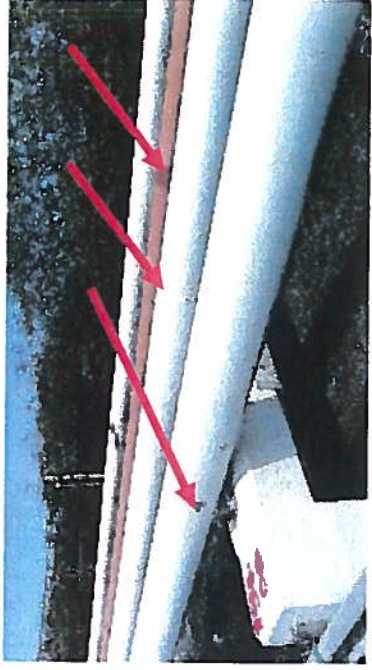


**Station 12+43 Corrosion of Welded Joint of the
Fire Salt Waterline**

**PAG ENGINEERING DIVISION VISUAL INSPECTION
MOBILE PIPELINE PROJECT STATIONS (12+84) ~ (13+42)**



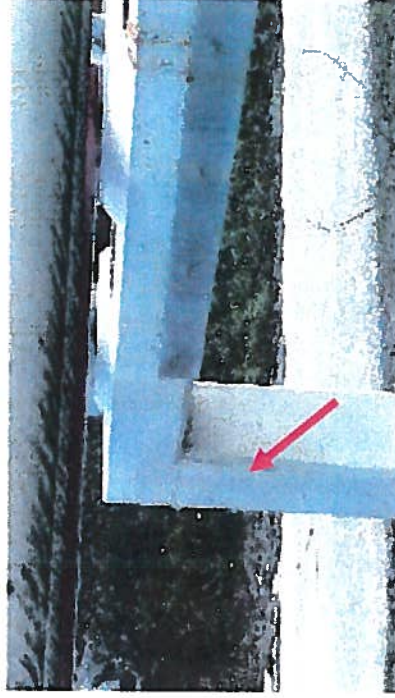
Station 12+84 Corrosion of Fire Salt
Waterline



Station 13+00 Corrosion at 3ea. Pipelines



Station 13+19 Column Support Concrete Spall
Repair



Station 13+42 Column Support Concrete Spall Repair

**PAG ENGINEERING DIVISION VISUAL INSPECTION
MOBILE PIPELINE PROJECT STATION (13+61) AT THE Y-JUNCTION AREA**



Replace Corroded Bolts/Nuts As Required. Paint Corroded Flanges and Gate Valves



Paint the Three Corroded Gate Valves Diesel and the Fire Gate Valve



Replace Corroded Bolts & Nuts as Required & Repaint All Flanges and Corroded Pipeline